

# Polo Shirts

pages: 70-75

POLO SHIRTS

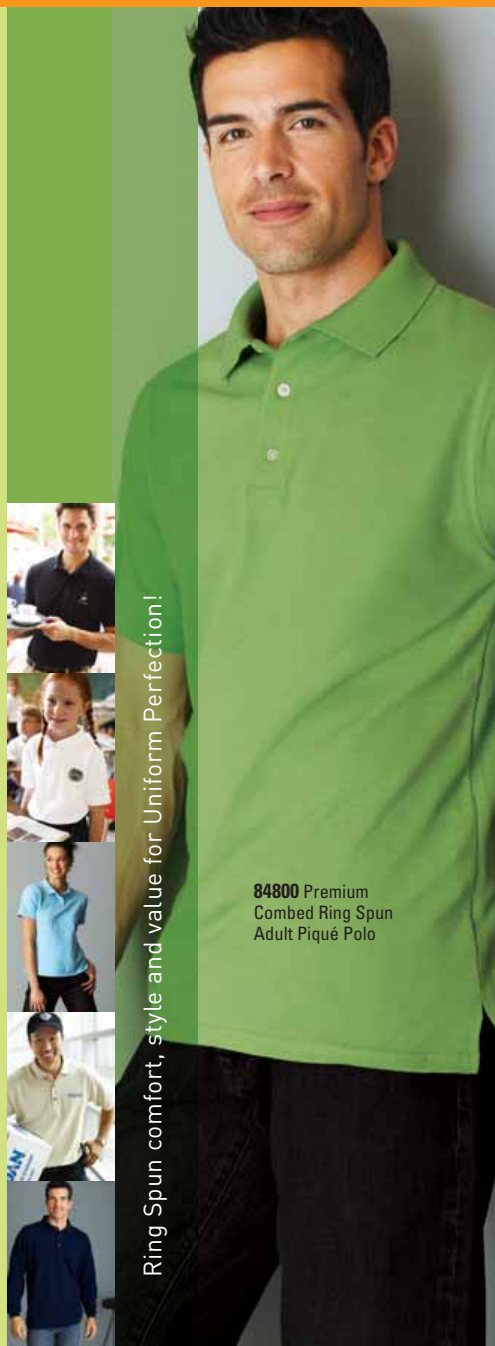
**74800** Easy care Spun Blend Adult Piqué Polo

**74800B** Easy care Spun Blend Youth Piqué Polo

**84800L** Premium Combed Ring Spun Ladies' Piqué Polo

**3800** Ultra Cotton® Adult Ring Spun Piqué Polo

**3400** Ultra Cotton® Adult Long Sleeve Ring Spun Piqué Polo



Ring Spun comfort, style and value for Uniform Perfection!

**84800** Premium Combed Ring Spun Adult Piqué Polo

# Polos

**GILDAN**  
gildan.com

## Fruit Of The Loom 65/35 Heavyweight Pique Polo

Code: 63204

Weight: 220-230g/m<sup>2</sup>

- Adult easy care, easy wear pique polo
- Guaranteed to perform at 60 degree wash
- Ideal for workwear
- Three self colour button fused placket and sewn in spare button
- Reinforced shoulder seams with single needle stitching
- Taped neckline for added comfort
- 1 x 1 rib flat knit collar and cuffs



63204



White 38	Heather Grey 84	Royal Blue 51	Burgundy 41	Navy 32
Black 36	Bottle Green 68R	Deep Navy A2	Sunflower SUN	Red 49

Fabric	Easy care 65% Polyester 35% Cotton
Weight	220-230g/m <sup>2</sup>
Size	S M L XL 2XL 3XL
To Fit (ins)	35-37 38-40 41-43 44-46 47-49 50-52
3XL available in White, Black, Navy and Heather Grey only	

## Bruntwood Heavyweight 65/35 Pique Polo

Code: BHPCP

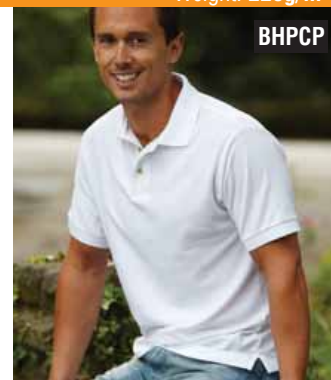
Weight: 220g/m<sup>2</sup>



- Adult easy care, easy wear heavyweight pique polo
- Reinforced shoulder seams
- Three natural horn look button placket
- Generous sizing for a more comfortable fit
- Rib cuffed sleeve

White WHI	Black BLK	Bottle Green 68P	Navy NYV
Royal Blue ROY	Bark Heather 68H	Red RED	

Fabric	65% Polyester 35% Cotton blend
Weight	220g/m <sup>2</sup>
Size	S M L XL 2XL 3XL
To Fit (ins)	42 44 46 48 51 53



## Kustom Kit Chunky® Polo Superwash® 60°

Code: KK407

Weight: 220g/m<sup>2</sup>

KUSTOM KIT

- Taped back neck
- Comfort finish cuff seams
- Double roll tip flat knit collar/cuffs
- Spare button, tape reinforced shoulder seams
- Twin needle stitched hem, shoulders & around armholes
- Twin needle overlocking throughout
- Slanted placket
- Half moon yoke
- Side vents
- Can be tumble dried

White WTE	Black BLK	Heather Grey 84	Navy NYV	Royal RYL	Lime LIM
-----------	-----------	-----------------	----------	-----------	----------

Fabric	65% Polyester 35% Cotton Pique
Weight	220g/m <sup>2</sup>
Size	S M L XL 2XL
To Fit (ins)	38 40 42 44 46-48



## Fruit Of The Loom 65/35 Pocket Pique Polo

Code: 63308

Weight: 170-180g/m<sup>2</sup>



- Guaranteed to perform at 60 degree wash
- Self-fabric breast pocket
- Adult easy care, easy wear pique polo
- Ideal for workwear
- Three self coloured button fused placket and sewn-in spare button
- 1 x 1 rib knit collar and cuffs
- Taped neckline for added comfort
- Reinforced shoulder seams with single needle stitching

White 38	Royal Blue 51	Black 36	Navy 32
----------	---------------	----------	---------

Fabric	Easy care 65% Polyester 35% Cotton
Weight	170-180g/m <sup>2</sup>
Size	S M L XL 2XL
To Fit (ins)	35-37 38-40 41-43 44-46 47-49



All sizes and fabric weights are approximate and for guidance only. Colours are only as accurate as the printing process allows.

**Kustom Kit Classic Pique Polo**

Code: **KK403**

Weight: 185g/m<sup>2</sup>

- Slanted placket
- Comfort finish cuff seams
- Double roll tip collar and cuffs
- Matching buttons with spare
- Tape reinforced shoulder seams
- Twin needle stitching throughout
- Flat knit collar and cuffs



**KK403**



Fabric	65% Polyester, 35% Cotton							
Weight	185g/m <sup>2</sup>							
Size	S	M	L	XL	2XL	3XL	4XL	5XL
To Fit (ins)	38	40	42	44	46-48	50-52	54-56	58-60
4XL & 5XL available in White, Navy, Bottle, Black, Red and Royal only								

**Jerzees Colours Hardwearing Polycotton Polo Shirt**

Code: **599M**

Weight: 210-215g/m<sup>2</sup>

- Double ripple effect on collar and cuff
- Suitable for 60 degree domestic wash
- Self coloured buttons
- Taped neck line for added comfort
- Ideal for work wear
- Side vents



**599M**



Fabric	65% Polyester 35% ringspun Cotton								
Weight	210-215g/m <sup>2</sup>								
Size	S	M	L	XL	2XL	3XL	4XL	5XL	6XL
To Fit (ins)	36-38	38-40	40-42	42-44	44-46	46-48	48-50	50-52	52-54
5XL and 6XL only available in Bottle Green, Bright Royal, French Navy and White									

**Bruntwood 65/35 Pique Polo**

Code: **BPCP**

Weight: 180g/m<sup>2</sup>

- Adult easy care, easy wear pique polo
- Reinforced shoulder seams
- Three natural horn look button placket
- Generous sizing for a more comfortable fit
- Rib cuffed sleeve



**BPCP**



Fabric	65% Polyester 35% Cotton blend						
Weight	180g/m <sup>2</sup>						
Size	S	M	L	XL	2XL	3XL	4XL
To Fit (ins)	42	44	46	48	51	53	55

**UCC 50/50 Heavyweight Pique Polo**

Code: **UCC004**

Weight: 240g/m<sup>2</sup>

- Adult heavyweight short sleeve polo shirt
- Taped back neck for extra comfort
- Anti roll raised detail on collar and cuffs
- 3 self coloured button placket
- 1 spare button on inside seam



**UCC004**



Fabric	50% Cotton 50% Polyester								
Weight	240g/m <sup>2</sup>								
Size	XS	S	M	L	XL	2XL	3XL	4XL	5XL
To Fit (ins)	36	38-40	42-44	46	48	50-52	54-56	58	60

**Kustom Kit Workwear Pique Polo**

Code: **KK400**

Weight: 180g/m<sup>2</sup>

- Taped back neck
- Comfort finish cuff seams
- Double roll tip collar and cuffs
- Mock horn buttons with spare
- Tape reinforced shoulder seams
- Twin needle stitched shoulders



**KK400**



Fabric	65% Polyester, 35% Cotton							
Weight	180g/m <sup>2</sup>							
Size	S	M	L	XL	2XL	3XL	*4XL	*5XL
To Fit (ins)	38	40	42	44	46-48	50-52	54-56	58-60
*4XL & *5XL only available in Black, Navy & White								

**Jerzees Colours Mens Classic Polycotton Polo**

Code: **539M**

Weight: 210-215g/m<sup>2</sup>

- Unique double yarn construction provides softness and strength for great appearance and perfect suitability for more demanding embroidery
- Fashion knit collar
- Two button placket with self-coloured buttons
- Ribbed cuff on sleeve ends
- Superb performance after repeated washing and wearing
- **Also available in ladies sizes, code 539F - page 86**
- **and children's sizes, code 539B - page 95**



**539M**



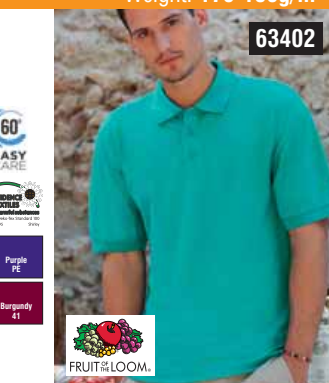
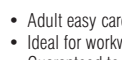
Fabric	65% Polyester 35% ringspun Cotton Pique									
Weight	210-215g/m <sup>2</sup>									
Size	XS	S	M	L	XL	2XL	3XL	4XL	5XL	6XL
To Fit (ins)	34-36	36-38	38-40	40-42	42-44	44-46	46-48	48-50	50-52	52-54
3XL & 4XL available in Black, Bottle Green, Bright Royal, Classic Red, French Navy, Light Oxford and White.										
5XL & 6XL available in Bright Royal, French Navy and White.										

**Fruit Of The Loom 65/35 Pique Polo**

Code: **63402**

Weight: 170-180g/m<sup>2</sup>

- Adult easy care, easy wear pique polo
- Ideal for workwear
- Guaranteed to perform at 60 degree wash
- 1x1 rib flat knit collar and cuffs
- Three self colour button fused placket and sewn-in spare button
- **Also available in ladies sizes, code 63212 - page 85**
- **Also available in children's sizes, code 63417 - page 95**



**63402**



Fabric	Easycare 65% Polyester 35% Cotton					
Weight	170-180g/m <sup>2</sup>					
Size	S	M	L	XL	2XL	3XL
To Fit (ins)	35-37	38-40	41-43	44-46	47-49	50-52
3XL available in White, Black, Navy and Heather Grey only						

**Gildan 65/35 Polyester Combed Pre Shrunken Cotton Pique Polo**

Code: 74800

Weight: 185g/m<sup>2</sup>

- Adult pique polo
- Tubular construction
- Easy care fabric guaranteed 60 degree wash
- 3 colour matched buttons
- Contoured welt collar and cuffs
- Twin needle bottom hem
- Sport Grey 90% Cotton 10% Polyester.
- **Also available in children's sizes, code 74800B - page 95**



74800

White 30	Navy 32	Forest Green 33	Black 36	Red 40	Royal 51	Mason 83
Sport Grey 95	Light Blue 69	Safety Orange 193	Safety Green 188 *	Sand 38	NEW Gold 24	NEW Purple 91

Fabric	65% Polyester 35% Cotton preshrunk
Weight	185g/m <sup>2</sup>
Size	S M L XL 2XL 3XL
To Fit (ins)	34-36 38-40 42-44 46-48 50-52 54-56
* Sport Grey 90% Cotton 10% Polyester.	

**UCC 50/50 Pique Polo**

Code: UCC003

Weight: 180g/m<sup>2</sup>

- Adult short sleeve polo shirt
- Taped back neck for extra comfort
- Tight knit construction
- 3 self coloured button placket
- 1 spare button on the inside seam



UCC003

White WHT	Bottle Green 63H	Navy NVT	Royal Blue 63V	Black B1K
Red 62Z	Burgundy 63B	Sky Blue 63Y	Heather Grey 63H	Kelly Green 100N

Fabric	50% Cotton 50% Polyester
Weight	180g/m <sup>2</sup>
Size	XS S M L XL 2XL 3XL 4XL 5XL
To Fit (ins)	36 38-40 42-44 46 48 50-52 54-56 58 60

**Jerzees Colours Pima Cotton Polo Shirt**

Code: 588M

Weight: 195-200g/m<sup>2</sup>

- 100% American Pima cotton
- Superfine fabric that is naturally soft, naturally strong and amazingly durable
- Affordable luxury and quality
- **Also available in Ladies sizes, code 588F - page 86**



588M

White WHT	Black B1K	Classic Pink 61P
French Navy FNA	Classic Red CSR	

NEW PRODUCT

Fabric	100% pima Cotton
Weight	195-210g/m <sup>2</sup>
Size	XS S M L XL 2XL
To Fit (ins)	34-36 36-38 38-40 40-42 42-44 44-46

**Hanes Beefy Polo™**

Code: G100

Weight: 220g/m<sup>2</sup>

- Bound neck and arm holes with twin needle stitching on hem
- Side seam styling giving great shape



G100

White WHT	Light Pink LP	Straw ST	Brown BR
Black BK	Royal Blue RB	Forest Green FG	Sky Blue SK
Mint M	Navy NV	Red RD	



Fabric	100% combed Cotton piqué
Weight	220g/m <sup>2</sup>
Size	S M L XL 2XL
To Fit (ins)	36 38 40-42 44 46

**Fruit Of The Loom Slim Fit Pique Polo**

Code: 63208

Weight: 210-220g/m<sup>2</sup>

- Cotton/elastane fabric with a slim fitting cut and shorter body length
- Narrow 2 button placket



63208

White 30	Navy 32	Black 36
----------	---------	----------

Fabric	97% cotton, 3% elastane
Weight	210 - 220g/m <sup>2</sup>
Size	S M L XL 2XL
To Fit (ins)	35-37 38-40 41-43 44-46 47-49

**Jerzees Colours Ultimate Cotton Polo Shirt**

Code: 577M

Weight: 210-215g/m<sup>2</sup>

- Combed cotton fine pique for superior hand feel and durability
- Contemporary cut
- Garment pre-shrunk and suitable for wash up to 60°C and low tumble dry
- An excellent surface for decoration



577M

NEW PRODUCT

White WHT	Azure Blue AZB	Black B1K	Burgundy BUR	Cactus CAC	Chocolate CHD
Classic Red CSR	French Navy FNA	Sky SKY	Titanium TIT	Grape GRP	Saffron SFN

Fabric	100% combed cotton
Weight	210-215g/m <sup>2</sup>
Size	XS S M L XL 2XL 3XL 4XL
To Fit (ins)	34-36 36-38 38-40 40-42 42-44 44-46 46-48 48-50

**Fruit Of The Loom Heavy 100% Cotton Pique Polo**

Code: 63558

Weight: 230-240g/m<sup>2</sup>

- Narrow two button fused placket, with self-coloured buttons and sewn in spare
- Fashionable side vents
- Sleeves with open cuffs and twin needle stitching detail
- Taped neckline and reinforced shoulder seams
- Ribbed flat knit collar with textured stripe detail



63558

White 30	Dark Heather HD	Royal Blue 51	Deep Navy AZ	Black 36
Stone BK	Brick Red BX	Forest Green TM		

Fabric	100% Cotton*
Weight	230-240g/m <sup>2</sup>
Size	S M L XL 2XL
To Fit (ins)	35-37 38-40 41-43 44-46 47-49
*Dark Heather 70% Cotton 30% Viscose	

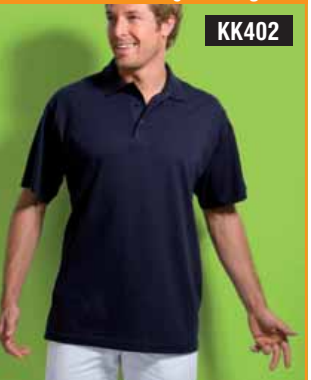
**Kustom Kit Jersey Knit Polo**

Code: KK402

Weight: 210g/m<sup>2</sup>

KUSTOM KIT.

- Taped back neck
- Comfort finish cuff seams
- Double roll tip flat knit collar
- Spare button
- Tape reinforced shoulder seams
- Twin needle stitched hem, cuffs & around armholes
- Twin needle overlocking throughout
- Slanted placket
- Half moon yoke
- Side vents



KK402

Black BK	Navy NV	White WTE
----------	---------	-----------

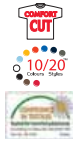
Fabric	100% Combed Cotton Single Jersey
Weight	210g/m <sup>2</sup>
Size	S M L XL 2XL
To Fit (ins)	38 40 42 44 46-48

**Hanes Top Polo Shirt**

Code: **G135**

Weight: 180g/m<sup>2</sup>

- Comfort fit
- Short sleeve polo shirt
- Three horn button on placket
- Original cuff sleeve and straight hem with twin needle stitching
- **Also available in ladies sizes, code 2950 - page 86**



White WT	Grey Heather* G1	Khaki K1	Black BK
Royal Blue RB	Navy NY	Sky Blue SK	Red RD

Fabric	100% combed Cotton piqué					
Weight	180g/m <sup>2</sup>					
Size	S	M	L	XL	2XL	3XL
To Fit (ins)	36	38-40	42	44-46	48	50-52

\*Grey Heather 85% Cotton 15% Viscose. 3XL only available in White, Ash, Red, Navy and Black



**G135**

**Kustom Kit Augusta Premium Polo**

Code: **KK405**

Weight: 210g/m<sup>2</sup>

**KUSTOM KIT.**

- Taped back neck
- Comfort finish cuff seams
- Double roll tip flat knit collar
- Spare button
- Tape reinforced shoulder seams
- Twin needle stitched hem, cuffs & around armholes
- Twin needle overlocking throughout
- Slanted placket
- Half moon yoke

White WTE	Black BLK	Bottle Green BGR	Light Blue LBL	Navy NYV
-----------	-----------	------------------	----------------	----------

Fabric	100% Combed Cotton Pique						
Weight	210g/m <sup>2</sup>						
Size	S	M	L	XL	2XL	3XL	4XL
To Fit (ins)	38	40	42	44	46-48	50-52	54-56

\*4XL only available in White, Navy & Black



**KK405**

**Fruit Of The Loom Premium 100% Cotton Pique Polo**

Code: **63202**

Weight: 170-180g/m<sup>2</sup>

- Adult 100% cotton, medium weight pique polo
- Narrow two button self coloured fused placket with sewn in spare
- Fashionable side vents
- Taped neckline for added comfort
- Reinforced shoulder seams with single needle stitching
- 1 x 1 rib flat knit collar and cuffs



White 30	Ash 83	Sky Blue 51	Royal Blue 51	Navy 52	Deep Navy 42
Black 36	Forest Green 14	Khaki 38	Sunflower 50	Orange 44	Red 40
Burgundy 41	Classic Olive 59				

Fabric	100% Cotton*				
Weight	170-180g/m <sup>2</sup>				
Size	S	M	L	XL	2XL
To Fit (ins)	35-37	38-40	41-43	44-46	47-49

\*Ash 90% Cotton 10% Polyester



**63202**

**Gildan 100% Cotton Combed Ring Spun Premium Polo**

Code: **84800**

Weight: 220g/m<sup>2</sup>

- Adult polo
- 100% cotton
- Arched locker patch
- Clean finished placket with reinforced bottom box
- Mitre fold woven label created hanging loop
- Side seamed with vent
- **Also available in ladies sizes, code 84800L - page 86**



White 30	Cherry Red 194	Black 36	Sand 38	Maroon 83	Sport Grey 295
Carolina Blue 109	Khaki 186	Yellow 189	Navy 32		

Fabric	100% combed ringspun Cotton*				
Weight	220g/m <sup>2</sup>				
Size	S	M	L	XL	2XL
To Fit (ins)	34-36	38-40	42-44	46	48

\* Sport Grey 90% Cotton 10% Polyester



**84800**

**Kustom Kit Popular Polo**

Code: **KK300**

Weight: 200g/m<sup>2</sup>

**KUSTOM KIT.**

- 3 button placket
- Twin needle hem and cuffs
- Reinforced shoulder seams
- Spare button
- Open sleeves



White WTE	Black BLK	French Navy FNA
Pink PKK	Lime LIM	Charcoal CCL

Fabric	100% Cotton				
Weight	200g/m <sup>2</sup>				
Size	S	M	L	XL	2XL
To Fit (ins)	38	40	42	44	46-48



**KK300**

**Jerzees Colours Classic Cotton Polo Shirt**

Code: **569M**

Weight: 195-200g/m<sup>2</sup>



**NEW PRODUCT**

- 100% cotton polo for adults
- Classic styling in ring spun cotton pique ideal for decoration
- Side vents
- Wide range of colours

White WHI	Apple APP	Aqua AQA	Black BLK	Bottle Green BGN
Bright Royal BRY	Classic Red CSR	French Navy FNA	Graphite GRP	Light Oatmeal LOK
Peach PEA	Rose RSE	Sky SKY	Yellow YEW	

Fabric	100% ring spun Cotton pique							
Weight	195-200g/m <sup>2</sup>							
Size	XS	S	M	L	XL	2XL	3XL	4XL
To Fit (ins)	34-36	36-38	38-40	40-42	42-44	44-46	46-48	48-50

3XL-4XL only available in Black, French Navy & White. XS only available in French Navy & White.



**569M**

**Gildan Heavyweight Ultra 100% Ring Spun Cotton Pique Polo**

Code: **3800**

Weight: 220g/m<sup>2</sup>

- Adult 100% preshrunk cotton, heavyweight pique polo
- Tubular construction
- Double needle bottom hem



White 30	Yellow Haze 63	Cardinal 11	Gold 24	Navy 52	Forest Green 53	Tangerine 55
Black 36	Sand 38	Red 40	Charcoal 42	Royal 51	Light Blue 69	Indigo Blue 80
Maroon 83	Sport Grey 295	Purple 81	Ash Grey 93	Dark Heather 108	Carolina Blue 109	

Fabric	100% Ring spun Jersey Cotton*					
Weight	220g/m <sup>2</sup>					
Size	XS	S	M	L	XL	2XL
To Fit (ins)	34-36	38-40	42-44	46-48	50-52	54-56

\* Sport Grey 90% Cotton 10% Polyester, Ash Grey 99% Cotton 1% Polyester, Dark Heather 50% Cotton 50% Polyester. Ash Grey, Cardinal Red, Carolina Blue, Charcoal, Dark Heather, Forest Green, Indigo Blue, Purple, Tangerine and Yellow Haze not available in XS.



**3800**

**Fruit Of The Loom Screen Stars Original Polo**

Code: **63214**

Weight: 170-180g/m<sup>2</sup>



- Adult 100% Cotton pique polo
- 1 x 1 rib flat knit collar with self fabric back neck tape
- Traditional two button collar
- Open cuffs and hem with twin needle stitching detail
- The ultimate promotional polo

White 30	Black 36	Red 40
Deep Navy 42	Royal Blue 51	Forest Green 14

Fabric	100% Cotton				
Weight	170-180g/m <sup>2</sup>				
Size	S	M	L	XL	2XL
To Fit (ins)	35-37	38-40	41-43	44-46	47-49



**63214**

**Fanshirt Mens Soft Jersey Polo Shirt**

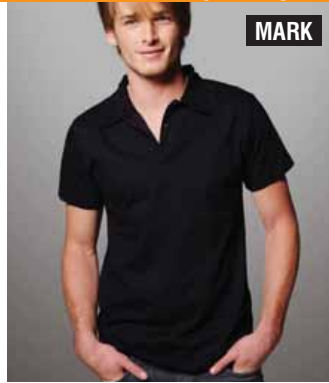
Code: MARK

Weight: 160g/m<sup>2</sup>



MARK

- SUPER SOFT touch
- Mens short sleeve fitted polo shirt
- Single jersey
- Tight knit
- Collar and body both use soft single jersey
- Tailored for a fitted retail look



White WTE	Black BLK	<b>NEW PRODUCT</b>			
Fabric	100% cotton super combed				
Weight	160g/m <sup>2</sup>				
Size	S	M	L	XL	XL
To Fit (ins)	34-36	38	40	42	42

**Fruit Of The Loom 100% Cotton Premium Tipped Pique Polo**

Code: 63448

Weight: 170-180g/m<sup>2</sup>



63448

- Adult 100% combed ringspun cotton, tipped pique polo
- Single contrast tipping to collar and cuffs
- Narrow two buttoned fused placket with self-coloured buttons and sewn in spare
- Taped neckline and reinforced shoulder seams
- Fashionable side vents
- Rib flat knit collar and cuffs



White	Black	Red	Deep Navy	Classic Olive	Sky Blue
Navy	Red	Navy	White	Stone	White
Fabric	100% combed ringspun cotton				
Weight	170-180g/m <sup>2</sup>				
Size	S	M	L	XL	2XL
To Fit (ins)	35-37	38-40	41-43	44-46	47-49

**Kustom Kit Contrast Pique Polo**

Code: KK404

Weight: 185g/m<sup>2</sup>

KUSTOM KIT.

KK404

- Slanted placket
- Comfort finish cuff seams
- Double roll tip collar and cuffs
- Contrast buttons with spare
- Tape reinforced shoulder seams
- Side vents
- Twin needle stitching throughout
- Contrast flat knit collar and cuffs
- Half moon yoke
- Taped back neck



White W	San Yellow SYE	Red RED	Indie Green IGH	Navy NNY	
Navy NNY	Navy NNY	Navy NNY	Navy NNY	Red RED	
Fabric	65% Polyester, 35% Cotton				
Weight	185g/m <sup>2</sup>				
Size	S	M	L	XL	2XL
To Fit (ins)	38	40	42	44	46-48

**Kustom Kit Tipped Pique Polo**

Code: KK409

Weight: 185g/m<sup>2</sup>

KUSTOM KIT.

KK409

- Slanted placket
- Comfort finish cuff seams
- Double roll tip collar and cuffs
- Matching buttons with spare
- Tape reinforced shoulder seams
- Side vents
- Twin needle stitching throughout
- Contrast stripe flat knit collar and cuffs
- Half moon yoke



White WTE	Black BLK	Red RED	Light Blue LBL	Navy NNY	Royal RYL
Navy NNY	Red RED	White WTE	Navy NNY	White WTE	White WTE
Black BLK	Navy NNY	White WTE	Black BLK	Chocolate 105	
Yellow YEL	Yellow YEL	Red RED	Orange 44	Natural 09	
Fabric	65% Polyester 35% Cotton				
Weight	185g/m <sup>2</sup>				
Size	S	M	L	XL	2XL
To Fit (ins)	38	40	42	44	46-48

**Kustom Kit St.Mellion Pique Polo**

Code: KK606

Weight: 210g/m<sup>2</sup>

KUSTOM KIT.

KK606

- Slanted placket
- Comfort finish cuff seams
- Double roll tip collar and cuffs
- Mock horn buttons with spare
- Tape reinforced shoulder seams
- Twin needle stitching throughout
- Contrast striped flat knit collar and cuffs
- Half moon yoke
- Contrast taped back neck



White WTE	Light Blue LBL	Black BLK	Navy NNY	Black BLK	White WTE
Navy NNY	White WTE	Bright Red BRE	White WTE	Lime C LIC	Bright Red BRE
Navy NNY	Black BLK	Black BLK	Chocolate CHO	Navy NNY	
San Yellow SYE	White WTE	Yellow YEL	Orange ORA	Light Blue LBL	
Fabric	100% combed Cotton pique				
Weight	210g/m <sup>2</sup>				
Size	S	M	L	XL	2XL
To Fit (ins)	38	40	42	44	46-48

**Gamegear® Club Polo**

Code: KK450

Weight: 185g/m<sup>2</sup>

GAMEGEAR®

KK450

- Taped back neck
- Comfort finish cuff seams
- Double roll tip flat knit collar
- Spare button
- Twin needle stitched throughout
- Slanted placket
- Side vents
- Open sleeves
- Flatlock stitching down shoulder/sleeve panel



Black BLK	Black BLK
Light Blue LBL	Red RED
White WTE	White WTE
Orange 44	Navy NNY
White WTE	White WTE
Fabric	65% Polyester 35% Cotton Pique
Weight	185g/m <sup>2</sup>
Size	S M L XL 2XL
To Fit (ins)	38 40 42 44 46-48

**Kustom Kit Oak Hill Polo Shirt**

Code: KK615

Weight: 210g/m<sup>2</sup>

KUSTOM KIT.

KK615

- Raglan sleeves
- Contrast curved panels down front and back raglans
- Contrast piping in cuffs
- Open sleeve
- Contrast placket
- Matching double roll tip flat knit collar
- Contrast herringbone taped side vents
- Twin needle overlocking throughout
- Contrast taped back neck
- Matching buttons



White WTE	Black BLK	Black BLK	White WTE	Navy NNY	
Navy NNY	White WTE	Bright Red BRE	Bright Red BRE	White WTE	
Fabric	100% Cotton				
Weight	210g/m <sup>2</sup>				
Size	S	M	L	XL	2XL
To Fit (ins)	38	40	42	44	46-48

**Kustom Kit Scottsdale Polo**

Code: KK617

Weight: 210g/m<sup>2</sup>

KUSTOM KIT.

KK617

- Contrast vertical panels down side back and front
- Contrast piping around cuffs
- Comfort finish cuff seams
- Contrast herringbone taped side vents
- Taped back neck



Navy NNY	White WTE
White WTE	Navy NNY
White WTE	Black BLK
Red RED	Red RED
Fabric	100% Cotton pique
Weight	210g/m <sup>2</sup>
Size	S M L XL 2XL
To Fit (ins)	38 40 42 44 46-48

**Kustom Kit Nautical Polo**

Code: **KK618**

Weight: 210g/m<sup>2</sup>

**KUSTOM KIT**

- Funnel neck
- Self fabric outer collar
- 1x1 knitted contrast striped inner collar
- Contrast tipped placket with matching zip and contrast striped woven zip puller
- Contrast piping around edge of cuffs
- Comfort finished cuff seams

**KK618**



Navy Nvy	<b>NEW PRODUCT</b>
White WTE	
Fabric	100% Cotton pique
Weight	210g/m <sup>2</sup>
Size	S M L XL 2XL
To Fit (ins)	38 40 42 44 46-48

**Regatta Wicking Polo**

Code: **TRS132**

Weight: 180g/m<sup>2</sup>

**Regatta**

**NEW PRODUCT**

**TRS132**

- Quick drying
- Good wicking performance
- Half moon yolk
- Ribbed collar and cuffs
- 3 button placket with dyed to match buttons
- Taped neckline and side vents
- Tonal Regatta embroidery to right sleeve



White WHI	Red RED	Navy Nvy	Black BLK
Fabric	Comfort Control polyester pique		
Weight	180g/m <sup>2</sup>		
Size	S	M	L XL 2XL 3XL
To Fit (ins)	38	40	42 44 47 50

**Gamegear® Track Pique Polo**

Code: **KK475**

Weight: 200g/m<sup>2</sup>

**GAMEGEAR**

- Short sleeve polo shirt
- Open cuffs
- Contrast side and sleeve panels
- Contrast piping
- Half moon yoke
- Contrast back neck tape
- **Also available in ladies sizes, code KK731 - page 87**

**KK475**



Black BLK	Navy Nvy	Black BLK	Black BLK	Black BLK	Black BLK
Black BLK	Navy Nvy	Black BLK	Black BLK	Black BLK	Black BLK
Black BLK	White WTE	White WTE	White WTE	White WTE	White WTE
Black BLK	Red RED	Navy Nvy	Black BLK	Black BLK	Black BLK
Royal RYL	Navy Nvy	Light Blue LBL	Gold GLD	White WTE	White WTE
White WTE	White WTE	White WTE	White WTE	White WTE	White WTE
Fabric	65% Polyester 35% Cotton				
Weight	200g/m <sup>2</sup>				
Size	*XXS	*XS	S M L XL 2XL 3XL		
To Fit (ins)	28/30	32/34	36/38 40 42 44 46-48 50-52		

\*XXS, XS & 3XL in Black/Gold/White, Black/Orange/White, Black/Red/White, Navy/Light Blue/White Only

**Gamegear® Match Play Polo**

Code: **KK610**

Weight: 210g/m<sup>2</sup>

**GAMEGEAR**

- Men's short sleeve polo shirt
- Twin needle stitching throughout
- Half moon yoke
- Slanted placket
- Taped reinforced shoulder seams
- Taped back neck
- Twin needle hem
- Herringbone taped side vents
- Double roll tip collar and cuffs

**KK610**



White WTE	White WTE	Black BLK	Navy Nvy	White WTE
Navy Nvy	Red RED	Red RED	White WTE	Green GRN
Fabric	98% Cotton, 2% Lycra			
Weight	210g/m <sup>2</sup>			
Size	S	M	L XL 2XL	
To Fit (ins)	38	40	42 44 46-48	

**Kustom Kit Sporting Pique Polo**

Code: **KK616**

Weight: 210g/m<sup>2</sup>

**KUSTOM KIT**

- Contrast slanted placket
- Contrast shoulder and sleeve panel
- Contrast herringbone side vents
- Contrast stripe flat knit collar
- Comfort finish cuff seams
- Twin needle stitching throughout
- Spare button
- Open sleeves
- Double roll tip collar

**KK616**



White WTE	White WTE	White WTE	White WTE	White WTE	Navy Nvy
Black BLK	Green GRN	Bright Red BRE	Royal RYL	Navy Nvy	White WTE
Black BLK	Black BLK	Black BLK	Light Blue LBL	Navy Nvy	White WTE
Bright Red BRE	Grey GRY	Orange 44	White WTE	Light Blue LBL	
Fabric	100% combed cotton pique				
Weight	210g/m <sup>2</sup>				
Size	S	M	L XL 2XL		
To Fit (ins)	38	40	42 44 46-48		

**STORMTECH Mojave Coolmax® Sport Polo**

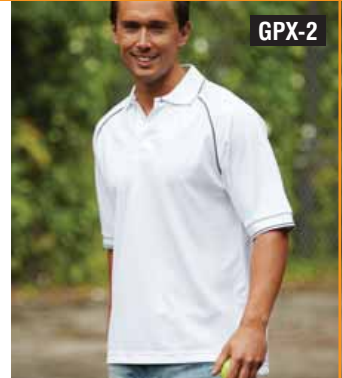
Code: **GPX-2**

Weight: 200g/m<sup>2</sup>

**STORMTECH**

- 100% Coolmax® extreme moisture management
- Rib knit collar with contrast tipping
- Hidden 3-button placket
- Raglan sleeves with contrast piping
- Fine double needle stitching and overlock finished seams
- Rib knit cuffs
- UV resistant
- **Also available in ladies sizes, code GPX-2W - page 87**

**GPX-2**



Navy Nvy	Red RED	Black BLK	White WHI
Iron IRN	Iron IRN	Iron IRN	Iron IRN
Fabric	100% Polyester Dupont Coolmax Extreme		
Weight	200g/m <sup>2</sup>		
Size	S	M	L XL 2XL
To Fit (ins)	35-38	39-42	43-46 47-50 50-53

**Fruit Of The Loom 100% Cotton Premium Long Sleeve Pique Polo**

Code: **63306**

Weight: 170-180g/m<sup>2</sup>

- Adult 100% Cotton, medium weight pique polo
- Narrow two self colour button fused placket, with sewn in spare
- Fashionable side vents
- 1 x 1 rib knit collar and cuffs
- Taped neckline for added comfort
- Reinforced shoulder seams with single needle stitching
- Long sleeves with cotton/elastane ribbed cuffs

**63306**



White 30	Ash 93	Navy 32	Deep Navy AZ
Black 36	Forest Green TM	Red 49	Royal Blue 51
Fabric	100% Cotton*		
Weight	170-180g/m <sup>2</sup>		
Size	S	M	L XL 2XL
To Fit (ins)	35-37	38-40	41-43 44-46 47-49

\*Ash 90% Cotton 10% Polyester

**Gildan Long Sleeve Ring Spun Pique Polo**

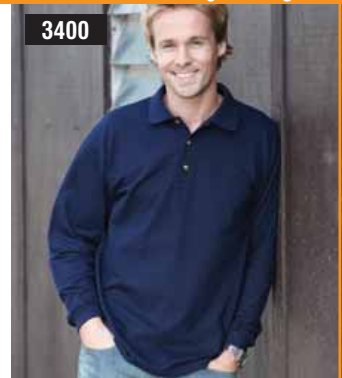
Code: **3400**

Weight: 220g/m<sup>2</sup>

**GILDAN**

- Adult 100% preshrunk cotton, long sleeve pique polo
- 3 woodtone buttons
- Clean finished placket with reinforced bottom box
- Soft combed ring spun yarn
- Contoured welt collar and cuffs
- Tubular Construction
- Lycra reinforced cuffs

**3400**



White 30	Navy 32	Sport Grey 295	Red 46	Black 36
Fabric	100% preshrunk Jersey Cotton*			
Weight	220g/m <sup>2</sup>			
Size	S	M	L XL 2XL	
To Fit (ins)	34-36	38-40	42-44 46-48 50-52	

\* Sport Grey 90% Cotton 10% Polyester.