

# Womens

pages: 82-92

Fanshirt

## Sweety



High Quality Yarn

We use 30 single yarn to create a smoother surface without being too light

Perfect balance between weight and flatness

Ideal for printing



Super Soft

Then fine brushes comb through the yarn pulling out 15% of volume, leaving behind only long straight fibres

Less likely to fray

Extremely soft version of cotton



Ringspun

Then we spin the cotton through a spinning wheel to create a ringspun fabric.



Fashion Cut

Fabric is then cut according to 3 dimensional spec for minimal underarm creasing



Low Price

Our marketing costs are kept to a minimum in order to give great value to our customers

Also available



sizes: S, M, L, XL, XXL

**SGS** Fanshirt products are manufactured in accordance to strict ethical standards, tested periodically by SGS and BSCI. Tests include labour law and chemical substance compliance requiring both AZO Free & OEKO TEX 100 certificates from its suppliers. For the full ethical policy, go to [www.fanshirt.eu](http://www.fanshirt.eu)

Designer fit & feel at great value

### Continental Ladies Fitted Round Neck T-Shirt

Code: N02

Weight: 240g/m<sup>2</sup>



CONTINENTAL

- Round neck fitted T-Shirt
- Flattering close cut fit
- Fine gauge 100% Cotton interlock fabric
- Fitted hemmed sleeves
- Unbeatable quality
- 17 colours

White WHR	Black BLK	Baby Pink BPI	Royal ROY	Sky Blue SKY	Canary Yellow CAY
Signal Red SIR	Aubergine AUB	Hot Pink HPI	Stereo Red SRE	Navy Blue NBL	Dark Brown DAB
Olive Green OLG	Charcoal Grey CRR	Kelly Green KGR	Hawaii Blue HAW	Sport Grey SPD	

Fabric	100% combed Cotton Interlock			
Weight	240g/m <sup>2</sup>			
Size	S	M	L	XL
To Fit (ins)	32	34	36	38



N02

### Fruit Of The Loom Lady-Fit Valuweight T-Shirt

Code: 61046

Weight: 160-165g/m<sup>2</sup>

- Feminine fit with shaped side seams
- Cotton/Lycra® rib crew neck with taped neckline
- Now produced using Belcoro® yarn for a softer feel and cleaner printing process
- Fine knit gauge for enhanced printability
- **Also available in men's sizes, code 61200 - page 67 and children's sizes code 61033 - page 93**

White 30	Deep Navy AZ	Black 36	Sky Blue YL	Royal Blue 51	Orange 44
Light Gold GR	Red 40	Brick Red BK	Light Pink 52	Fuchsia 57	Sunflower SUN
Kelly Green 47	Charcoal 57				

Fabric	100% cotton, Belcoro® yarn				
Weight	160-165g/m <sup>2</sup>				
Size	XS	S	M	L	XL
Dress Size	8	10	12	14	16



61046

### Gildan 100% Cotton Ladies Fitted Ring Spun, Soft Style™ T-Shirt

Code: 64000L

Weight: 150-155g/m<sup>2</sup>

- Fashionable 1/2" rib knit collar
- 100% cotton preshrunk ringspun jersey for dependable after wash performance
- Sport Grey 90% Cotton 10% Polyester
- Taped neck and shoulder
- **Also available in men's sizes, code 64000 - page 65**

White 30	Navy 32	Black 36	Azalea 71	Chestnut 84	Sport Grey 295	Sky 187
Orchid 191	Avocado 195	Salmon 196	Kivi 186	Cherry Red 194	NEW Charcoal 42	NEW Dark Charcoal 105
NEW Irish Green 167	NEW Light Blue 69	NEW Light Pink 20	NEW Red 40	NEW Royal 51		

Fabric	100% ringspun Cotton*				
Weight	150-155g/m <sup>2</sup>				
Size	S	M	L	XL	2XL
To Fit (ins)	10	12	14	16	18

\* Sport Grey 90% Cotton 10% Polyester



64000L

GILDAN

### Fanshirt Ladies Soft Touch Fitted T-shirt

Code: SWEETY

Weight: 145g/m<sup>2</sup>



- SUPER SOFT touch
- Single jersey
- Tight knit
- Twin needle on neck, bottom hem and armhole
- Tailored for a retail look

White WHR	Black BLK	Cement CEM	Chocolate CHC
Coral Pink COP	Gold GOL	Olive Green OLG	Super Royal SUR
Pink PKK	Red RED	Sky Blue SKY	

Fabric	100% cotton super combed				
Weight	145g/m <sup>2</sup>				
Size	S	M	L	XL	2XL
To Fit (ins)	32-34	34-37	37-40	40-43	44-46



SWEETY

All sizes and fabric weights are approximate and for guidance only. Colours are only as accurate as the printing process allows.

**Fanshirt Ladies Soft Touch Longer Length Fitted T-Shirt**

Code: **CANDY**

Weight: 150g/m<sup>2</sup>

**fan/hirt®**

- SUPER SOFT touch
- Longer length
- Single jersey
- Tight knit
- Twin needle on neck, bottom hem and armhole
- Tailored for a retail look



**CANDY**

White WH	Black BLK	<b>NEW PRODUCT</b>			
Fabric	100% cotton super combed				
Weight	150g/m <sup>2</sup>				
Size	S	M	L	XL	
To Fit (ins)	32	34	37	40	

**Stedman Ladies Classic Bodyfit T-Shirt**

Code: **ST2600**

Weight: 155g/m<sup>2</sup>

**Stedman®**

- Short Sleeve T-Shirt
- Single needle stitching around collar
- Twin needle stitching on sleeves and hem
- Side seams



**ST2600**

White WH	Navy Blue NAV	Scarlet Red SRE	Black Oat BLO	Light Pink LPI	Orange OR
Light Blue LBL	Yellow YEL	Bright Royal BR	Grey Heather EYH	Kelly Green KEG	
Fabric	100% ringspun Cotton*				
Weight	155g/m <sup>2</sup>				
Size	S	M	L	XL	
To Fit (ins)	32-34	34-37	37-40	40-43	
*Grey Heather 85% Cotton, 15% viscose					

**Fanshirt Ladies Crew Neck Fitted T-shirt**

Code: **MELODY**

Weight: 240g/m<sup>2</sup>

**fan/hirt®**

- Fitted interlock 240
- 100% combed cotton ring spun
- Prewashed to avoid shrinkage



**MELODY**

White WH	Black BLK	Kelly Green KGN	Navy NY	Fuchsia FUS
Pink PK	Red RD	Sky Blue SKY		
Fabric	100% combed cotton ring spun			
Weight	240g/m <sup>2</sup>			
Size	S-M	M-L	L-XL	
To Fit (ins)	32	34	37	

**Hanes Elegance Top-T™ T-Shirt**

Code: **2900**

Weight: 160g/m<sup>2</sup>



- Short Sleeve T-Shirt
- Styled with a round neck and feminine comfort cut
- Twin needle stitching on hems and sleeve, with side seam finish and narrow rib neck band
- **Also available in men's sizes, code 5131 - page 66**



**2900**

Image for illustration purposes only

White WH	Black BK	<b>COMFORT CUT</b>			
Fabric	100% pure ringspun Cotton				
Weight	160g/m <sup>2</sup>				
Size	S	M	L	XL	
Dress Size	30	32	34	36	

**Kustom Kit Comfy® T-Shirt**

Code: **KK700**

Weight: 180g/m<sup>2</sup>

**KUSTOM KIT**

- Comfort finish cuff/neck seams
- Tape reinforced shoulder seams
- Twin needle stitched hem & cuffs
- Twin needle overlocking throughout
- Shaped side seams
- Open sleeves
- Self fabric bound neck
- Superior printing surface



**KK700**

White WTE	Black BLK	Raspberry RAS					
Fabric	100% Combed Cotton Single Jersey						
Weight	180g/m <sup>2</sup>						
Dress Size	8	10	12	14	16	18	20
Bust	30	32	34	36	38	40	42
*20 only available in Black & White							

**Fruit Of The Loom Lady-Fit Crew Neck T-Shirt**

Code: **61056**

Weight: 200-210g/m<sup>2</sup>



- Ladies crew neck fitted T-Shirt
- Soft stretchy cotton/elastane fabric for shape retention comfort and fit
- Shaped fitting with side seams
- Self fabric binding to neckline
- Twin needle stitching detail on sleeves and hem
- **Also available in men's sizes, code 61262 - page 67**



**61056**

White 38	Sky Blue 17	Deep Navy 12	Black 36	Chocolate CA	Light Pink 52	
Red 43	Fuchsia 17	Classic Olive 52	Orange 4			
Fabric	95% Cotton 5% Elastane					
Weight	200-210g/m <sup>2</sup>					
Size	XS	S	M	L	XL	2XL
Dress Size	8	10	12	14	16	18

**Hanes Spicy-T™ Crew Neck T-Shirt**

Code: **5300**

Weight: 205g/m<sup>2</sup>



- 100% pure ring spun cotton crew neck T-Shirt
- 1x1 rib knit, allowing great slim fit styling
- Side seams and twin needle finish on the hem



**5300**

White WH	Grey Heather GY	Sky Blue SK	Candy Pink CP		
Red RD	Royal Blue RB	Navy NY	Black BK		
Fabric	100% pure ringspun Cotton, 1x1 rib knit				
Weight	205g/m <sup>2</sup>				
Size	XS	S	M	XL	
Dress Size	8	10	12	14	16
*Grey Heather 85% Cotton 15% Viscose					

**Continental Ladies Slim-Fit Jersey T-Shirt**

Code: **N12**

Weight: 155g/m<sup>2</sup>



- Tailored Feminine Fit
- 100% combed cotton jersey
- Fine rib trim crew neck
- Invisible stitching to hem and sleeves
- Stitch detail around armholes and across shoulders
- Self coloured size tab in neck
- Unbranded – Ideal for re-branding
- Retail quality
- 6 Colours



**N12**

White WH	Black BLK	Aqua AQU	Brazilian Yellow BZY	Tropical Green TRG	Raspberry RAS
Fabric	100% combed Cotton				
Weight	155g/m <sup>2</sup>				
Size	XS	S	M	L	
To Fit (ins)	30	32	34	36	

**Fruit Of The Loom Lady-Fit Organic Cotton T-Shirt**

Code: 61192

Weight: 140g/m<sup>2</sup>



- 100% certified organic cotton, unbleached and undyed for a natural finish
- 1 X 1 rib binding on neckline
- Shaped side seams and longer body length
- **Also available in men's sizes, code 61188 - page 68 and children's sizes, code 61003 - page 93**



61192

Fabric	100% Organic Cotton				
Weight	140g/m <sup>2</sup>				
Size	XS	S	M	L	XL
Dress Size	8	10	12	14	16

**Continental Ladies Bamboo Raglan T-Shirt**

Code: N43

Weight: 115g/m<sup>2</sup>

**NEW PRODUCT**

- Flattering Relaxed Fit
- Scooped neck
- Comfortable raglan shoulder construction
- Twin needle detail to hem
- Capped raw cut sleeve
- Superior ultra soft hand feel
- Sustainable natural fibres
- Hypoallergenic, Anti Bacterial and Biodegradable
- Cooling in summer / Warm in winter



N43

Fabric	70% Bamboo Viscose 30% Organic Cotton		
Weight	115g/m <sup>2</sup>		
Size	S	M	L
To Fit (ins)	32	34	36

**Continental Ladies Bamboo Jersey T-Shirt**

Code: N44

Weight: 115g/m<sup>2</sup>

**NEW PRODUCT**

- Feminine Relaxed Fit
- 1.5 cm crew neck
- Invisible stitched detail to hem and cuffs
- Superior ultra soft hand feel
- Sustainable natural fibres
- Hypoallergenic, Anti Bacterial and Biodegradable
- Cooling in summer / Warm in winter
- **Also available in men's sizes, code N45 - page 67**



N44

Fabric	70% Bamboo Viscose 30% Organic Cotton		
Weight	115g/m <sup>2</sup>		
Size	S	M	L
To Fit (ins)	32	34	36

**Continental Ladies Melange Scooped Neck Top**

Code: N14

Weight: 160g/m<sup>2</sup>

- Fitted Top
- Flattering close cut fit
- Superior melange effect fabric



N14

Fabric	60% combed Cotton, 40% Polyester		
Weight	160g/m <sup>2</sup>		
Size	S	M	L
To Fit (ins)	32	34	36

**Fruit Of The Loom Lady-Fit Lightweight Scoop Neck T-Shirt**

Code: 61194

Weight: 125-135g/m<sup>2</sup>



- Soft lightweight fabric and shaped side seams for a more contemporary fit
- Low scoop neck with self fabric binding



61194

White WB	Black BK	Light Pink S2			
Sky Blue Y1	Deep Navy A2				
Fabric	100% Cotton				
Weight	125-135g/m <sup>2</sup>				
Size	XS	S	M	L	XL
Dress Size	8	10	12	14	16

**Fanshirt Ladies Short Sleeve Fitted T-shirt**

Code: MARINA

Weight: 145g/m<sup>2</sup>

**fanshirt®**

- SUPER SOFT touch
- Single jersey
- Tight knit
- Open V neck and capped sleeves
- 2 ply rib on collar and sleeve
- Twin needle on neck, bottom hem and armhole
- Tailored for a fitted retail look



MARINA

Fabric	100% cotton super combed			
Weight	145g/m <sup>2</sup>			
Size	S	M	L	XL
To Fit (ins)	32	34	37	40

**Stedman Ladies V-Neck Short Sleeve T-Shirt**

Code: ST2700

Weight: 155g/m<sup>2</sup>

- V-Neck T-Shirt
- Side seams
- 100% ringspun Cotton
- Twin needle stitching
- Excellent promotional T-Shirt



ST2700

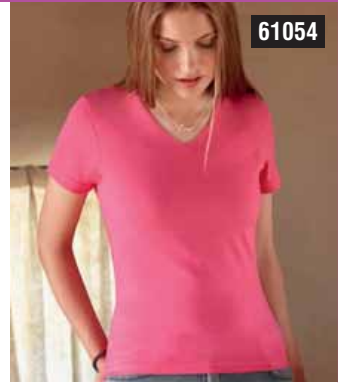
White WB	Navy Blue NY	Scarlet Red SR	Black Opal BO	
Light Blue LBL	Yellow YEL	Bright Royal BR	Light Pink LPI	
Fabric	100% ringspun Cotton, single jersey			
Weight	155g/m <sup>2</sup>			
Size	S	M	L	XL
Dress Size	32-34	34-37	37-40	40-43

**Fruit Of The Loom Lady-Fit V-Neck T-Shirt**

Code: 61054

Weight: 200-210g/m<sup>2</sup>

- Ladies V-neck fitted T-Shirt
- Soft stretchy cotton/elastane fabric for shape retention, comfort and fit
- Shaped fitting with side seams
- Self fabric binding to neckline
- Twin needle stitching detail on sleeves and hem



61054

Fabric	95% Cotton 5% Elastane					
Weight	200-210g/m <sup>2</sup>					
Size	XS	S	M	L	XL	2XL
Dress Size	8	10	12	14	16	18

**Fruit Of The Loom Lady Fit Long Sleeve Crew-Neck T-Shirt**

Code: 61022

Weight: 200-210g/m<sup>2</sup>



- Soft stretchy cotton/elastane fabric for shape retention, comfort and fit
- Shaped side seams for a feminine fit
- Self fabric binding to neckline
- Twin needle stitching detail on sleeves and hem



61022

White 30	Black 36	Deep Navy AZ	Chocolate G0
----------	----------	--------------	--------------

Fabric	95% Cotton 5% Elastane				
Weight	200-210g/m <sup>2</sup>				
Size	XS	S	M	L	XL
Dress Size	8	10	12	14	16

**Fruit Of The Loom Lady-Fit Hooded T-Shirt**

Code: 61198

Weight: 125-135g/m<sup>2</sup>



- Soft lightweight fabric and shaped side seams for a more contemporary fit
- Self fabric hood with back neck tape and V-front opening
- **Also available in Men's sizes, code 61190 - page 69**



61198

White 30	Black 36	Light Pink 52
Sky Blue YT	Deep Navy AZ	

Fabric	100% Cotton				
Weight	125-135g/m <sup>2</sup>				
Size	XS	S	M	L	XL
Dress Size	8	10	12	14	16

**Fruit Of The Loom Lady-Fit Strap T-Shirt**

Code: 61024

Weight: 210-220g/m<sup>2</sup>



- Straps and neckline with self-fabric binding
- 100% Cotton 1x1 rib knit



61024

White 30	Black 36	Orange A4	Fuchsia 27
Sunflower 50N	Red 40	Deep Navy AZ	

Fabric	100% Cotton, 1 x 1 rib				
Weight	210-220g/m <sup>2</sup>				
Size	XS	S	M	L	XL
Dress Size	8	10	12	14	16

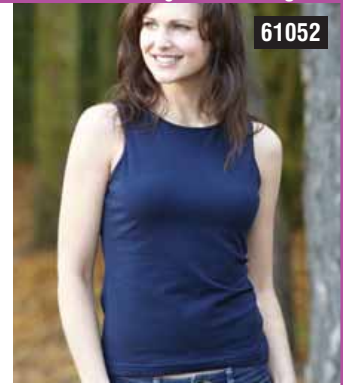
**Fruit Of The Loom Lady-Fit Sleeveless T-Shirt**

Code: 61052

Weight: 200-210g/m<sup>2</sup>



- Ladies sleeveless fitted T-Shirt
- Soft stretchy cotton/elastane fabric for shape retention, comfort and fit
- Shaped fitting with side seams
- Self fabric binding to neckline
- Twin needle stitching detail on hem
- High cut armholes with self-fabric binding



61052

White 30	Deep Navy AZ	Black 36
----------	--------------	----------

Fabric	95% Cotton 5% Elastane				
Weight	200-210g/m <sup>2</sup>				
Size	XS	S	M	L	XL
Dress Size	8	10	12	14	16

**Hanes Spicy-T™ Tank Top T-Shirt**

Code: 5360

Weight: 205g/m<sup>2</sup>



- 100% pure ringspun cotton Tank top
- 1x1 rib knit, allowing great slim fit styling
- Side seams and twin needle finish on the hem



5360

White WH	Black BK		
----------	----------	--	--

Fabric	100% pure ringspun Cotton, 1x1 rib knit				
Weight	205g/m <sup>2</sup>				
Size	XS	S	M	L	XL
Dress Size	30	32	34	36	38

**Continental Ladies Racerback Vest**

Code: N06

Weight: 240g/m<sup>2</sup>



NEW PRODUCT

N06

- Fashionable fit and cut
- 100% combed cotton 2x1 rib
- Deep 1.5 cm Binding to neck and armholes
- Twin needle stitching to hem
- Self coloured size tabs in neck
- Unbranded – Ideal for re-branding
- Retail quality
- Reactive dyed
- 6 Colours



White WHI	Black BLK	Grass Green GRG	Dark Brown DAB	Hot Pink HPI	Red RED
-----------	-----------	-----------------	----------------	--------------	---------

Fabric	100% combed Cotton			
Weight	240g/m <sup>2</sup>			
Size	S	M	L	
To Fit (ins)	32	34	36	

**Fanshirt Ladies Soft Jersey Polo Shirt**

Code: MONICA

Weight: 145g/m<sup>2</sup>



- SUPER SOFT touch
- Short sleeve fitted polo shirt
- Tight knit
- Single Jersey, tight knit
- Collar and body both use soft single jersey
- Tailored for a fitted retail look



MONICA

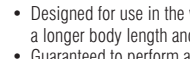
White WHI	Black BLK	<b>NEW PRODUCT</b>
-----------	-----------	--------------------

Fabric	100% cotton super combed			
Weight	145g/m <sup>2</sup>			
Size	S	M	L	XL
To Fit (ins)	32	34	37	40

**Fruit Of The Loom Lady-Fit 65/35 Polo**

Code: 63212

Weight: 170-180g/m<sup>2</sup>



- Designed for use in the workplace with a longer body length and looser fit
- Guaranteed to perform at 60 degree wash temperature
- Fused placket with two self-coloured buttons
- Easy care fabric
- **Also available in men's sizes, code 63402 - page 71**
- **Also available in children's sizes, code 63417 - page 95**



63212

White 30	Deep Navy AZ	Sunflower 50N	Red 40
Sky Blue YT	Black 36	Royal Blue 51	

Fabric	Easy care 65% Polyester, 35% Cotton					
Weight	170-180g/m <sup>2</sup>					
Size	XS	S	M	L	XL	2XL
Dress Size	8	10	12	14	16	18

**Kustom Kit Ladies Classic Polo Shirt**

Code: **KK703**

Weight: 185g/m<sup>2</sup>

**KUSTOM KIT.**

- Twin needle stitching across shoulder seams around armholes and cuffs
- Half moon yoke
- Slanted placket
- Taped reinforced shoulder seams
- Taped back neck
- **Also available in men's sizes, code KK403 - page 71 and children's sizes, code KK406 - page 96**



Fabric	65% Polyester, 35% Cotton							
Weight	185g/m <sup>2</sup>							
Dress Size	8	10	12	14	16	18	20	22
Bust	30	32	34	36	38	40	42	44



**KK703**

**Fruit Of The Loom Lady-Fit Polo**

Code: **63560**

Weight: 210-220g/m<sup>2</sup>

- Restyled with a longer body length for an improved fit
- Soft stretchy cotton/elastane fabric for shape retention, comfort and fit
- Flat knit collar with taped neckline for comfort
- Two button narrow placket with self-coloured buttons and sewn-in spare
- Ribbed cuffs with single needle top stitching
- Shaped fitting with side seams and fashionable side vents



**63560**



Fabric	97% Cotton 3% Elastane						
Weight	210-220g/m <sup>2</sup>						
Size	XXS	XS	S	M	L	XL	2XL
Dress Size	6	8	10	12	14	16	18
XXS available in White and Sky Blue only							



**Gildan 100% Cotton Ladies Combed Ring Spun Premium Polo**

Code: **84800L**

Weight: 220g/m<sup>2</sup>

- Tailored ladies fit
- 100% cotton
- Reversed placket with reinforced bottom box
- Side seamed with vent
- Bar tack collar label
- 2 pearlized buttons
- Contoured welt collar and cuffs
- **Also available in men's sizes, code 84800 - page 73**



Fabric	100% ringspun Cotton*					
Weight	220g/m <sup>2</sup>					
Size	XS	S	M	L	XL	2XL
To Fit (ins)	8	10	12	14	16	18
* Sport Grey 90% Cotton 10% Polyester						



**84800L**



**Hanes Elegance Top Polo™**

Code: **2950**

Weight: 180g/m<sup>2</sup>

- Styled for women in a pique knit fabric, with a comfort cut
- 3 button ladies placket with self-coloured buttons
- Open cuff sleeve and straight hem
- **Also available in men's sizes, code G135 - page 73**



Fabric	100% pure ringspun Cotton piqué			
Weight	180g/m <sup>2</sup>			
Size	S	M	L	XL
Dress Size	32-34	34-37	37-40	40-43



**2950**

**Jerzees Colours Ladies Classic Polycotton Polo**

Code: **539F**

Weight: 210-215g/m<sup>2</sup>

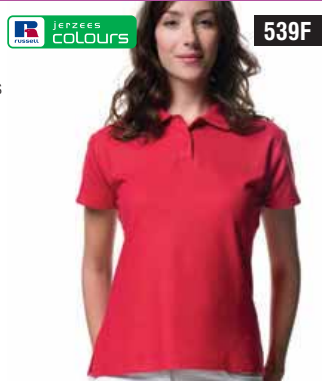
- Ladies fit polo shirt
- Unique double yarn construction provides softness and strength for a great appearance
- Side vents and open sleeve with twin needle hems
- **Also available in children's sizes, code 539B - page 95**
- **Also available in men's sizes, code 539M - page 71**



**539F**



Fabric	65% polyester / 35% Ring Spun Cotton Pique							
Weight	210-215g/m <sup>2</sup>							
Size	XS	S	M	L	XL	2XL	3XL	4XL
To Fit (ins)	30-32	32-34	34-36	36-38	38-40	40-42	42-44	44-46
Dress Size	8	10	12	14	16	18	20	22
3XL & 4XL Only available in Bottle Green, Bright Royal and French Navy								



**Jerzees Colours Ladies Pima Cotton Polo Shirt**

Code: **588F**

Weight: 195-200g/m<sup>2</sup>

- 100% American Pima cotton
- Superfine fabric that is naturally soft, naturally strong and amazingly durable
- Affordable luxury and quality
- **Also available in Men's sizes, code 588M - page 72**



Fabric	100% pima Cotton					
Weight	195-200g/m <sup>2</sup>					
Size	XS	S	M	L	XL	2XL
To Fit (ins)	30-32	32-34	34-36	36-38	38-40	40-42
Dress Size	8	10	12	14	16	18



**588F**

**Kustom Kit St Mellion Polo**

Code: **KK706**

Weight: 210g/m<sup>2</sup>

**KUSTOM KIT.**

- Taped back neck
- Comfort finish cuff seams
- Spare button
- Tape reinforced shoulder seams
- Shaped side seams
- Twin needle stitched hem, shoulders & around armholes
- Twin needle overlocking throughout
- Slanted placket with women's fastening



Fabric	100% Combed Cotton Pique					
Weight	210g/m <sup>2</sup>					
Dress Size	10	12	14	16	18	20
Bust	32	34	36	38	40	42



**KK706**

**Fruit Of The Loom Lady-Fit Rib Polo**

Code: **63502**

Weight: 210-220g/m<sup>2</sup>

- Self-fabric collar and buttonless placket
- Short, capped sleeves
- 100% cotton 1x1 rib fabric



**63502**



Fabric	100% Cotton, 1 x 1 rib					
Weight	210-220g/m <sup>2</sup>					
Size	XS	S	M	L	XL	
Dress Size	8	10	12	14	16	



**Kustom Kit Kate Comfortec® Polo**

Code: **KK705**

Weight: 210g/m<sup>2</sup>

**KUSTOM KIT.**

**STRETCH**

**KK705**

- Taped back neck
- Comfort finish cuff seams
- Double roll tip flat knit collar/cuff
- Spare button
- Tape reinforced shoulder seams
- Twin needle stitched hem, shoulders & around armholes
- Side vents



White WTE	Black BLK	Raspberry RAS	Acorn ADA	Light Blue LBL
Peppercorn BEG	Navy NVT	Lime LIM	Primrose PMS	

Fabric	98% Cotton 2% Lycra				
Weight	210g/m <sup>2</sup>				
Dress Size	8	10	12	14	16 18 20*
Bust	30	32	34	36	38 40 42

\*20 only available in Black & White

**Kustom Kit Ladies Sophia Comfortec Polo Shirt**

Code: **KK732**

Weight: 210g/m<sup>2</sup>

**KUSTOM KIT.**

**STRETCH**

**KK732**

- 1x1 knitted collar and cuffs
- Two buttoned self fabric open neck placket
- Shaped side seams
- Side vents
- Comfort finished cuff seams



White WTE	Black BLK
Lime LIM	Raspberry RAS

**NEW PRODUCT**

Fabric	98% Cotton/2% Lycra pique				
Weight	210g/m <sup>2</sup>				
Dress Size	8	10	12	14	16 18
Bust	30	32	34	36	38 40

**STORMTECH Women's Mojave Coolmax® Sport Polo**

Code: **GPX-2W**

Weight: 200g/m<sup>2</sup>

**STORMTECH**

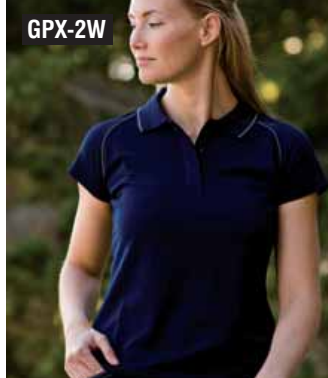
**GPX-2W**

- 100% Coolmax® extreme moisture management
- Rib knit collar with contrast tipping
- Hidden 3-button placket
- Raglan sleeves with contrast piping
- Fine double needle stitching and overlock finished seams
- Rib knit cuffs
- UV resistant
- **Also available in mens sizes, GPX-2 - page 75**



Navy NVT	Red RED	Black BLK	White WTE
Iron IRN	Iron IRN	Iron IRN	Iron IRN

Fabric	100% Polyester Dupont Coolmax Extreme			
Weight	200g/m <sup>2</sup>			
Size	S	M	L	XL
To Fit (ins)	32-35	35-38	38-41	41-44



**Gamegear® Ladies Track Top**

Code: **KK960**

Weight: 115g/m<sup>2</sup>

**GAMEGEAR.**

- Full zip front
- Raglan sleeves
- Centre sleeve panel with contrast piping
- Elasticated cuffs
- Straight front hem
- Curved back hem with elasticated draw cord and one toggle either side
- **Easy access for decoration**
- **Also available in mens sizes, code KK990 - page 104**

Black BLK	Navy NVT
Black BLK	Navy NVT
White WTE	White WTE

Fabric	100% Polyester microfibre with peach finish*				
Weight	115g/m <sup>2</sup>				
Dress Size	8	10	12	14	16 18
Bust	30	32	34	36	38 40

\*100% polyester mesh body lining, 100% polyester sleeve lining



**Gamegear® Ladies Track Pant**

Code: **KK961**

Weight: 115g/m<sup>2</sup>

**GAMEGEAR.**

- Half elasticated draw cord waist
- Flat front waist
- Two side zipped pockets
- Straight hem
- Lower leg opening with zip fastening
- Contrast piping down outside leg
- **Also available in mens sizes, code KK985 - page 104 and children's sizes, code KK985K - page 104**

Black BLK	Navy NVT
White WTE	White WTE

Fabric	100% Polyester microfibre with peach finish*				
Weight	115g/m <sup>2</sup>				
Dress Size	8	10	12	14	16 18
Waist (ins)	23	25	27	29	31 33

\*100% polyester mesh lining to knee  
100% polyester to lower leg



**Continental Ladies Distressed Vintage Washed Pullover Hoodie**

Code: **N53W**

Weight: 340g/m<sup>2</sup>



- Ladies hooded sweatshirt
- Self coloured draw cord
- Front pouch pocket

Washed Yellow WYE	Washed Pink WPI	Washed Black WBL
Washed Kelly Green WKG	Washed Navy Blue WNB	

Fabric	80% Combed Cotton, 20% Polyester			
Weight	340g/m <sup>2</sup>			
Size	XS	S	M	L
To Fit (ins)	30	32	34	36



**Continental Ladies Zip-Through Hooded Sweatshirt**

Code: **N53Z**

Weight: 320g/m<sup>2</sup>



- Ladies zip-through hooded sweatshirt
- Self coloured draw cord
- Front pouch pocket
- Extra deep fashion rib

Black BLK	Navy Blue NBL	Army Green ARM	Red RED
-----------	---------------	----------------	---------

Fabric	80% Combed Cotton, 20% Polyester			
Weight	320g/m <sup>2</sup>			
Size	XS	S	M	L
To Fit (ins)	30	32	34	36



**Russell Workwear Ladies Sweatshirt Cardigan**

Code: **273M**

Weight: 295g/m<sup>2</sup>



**273M**

- Stylish adult cardigan in fashionable fleece fabric
- All the smartness of a cardigan with the comfort of a sweat
- Cardigan version of our iconic 762
- Outstanding performance – wash after wash
- Colour and quality consistency
- Side seam pockets
- 6 Button closing front, 5 button closing front on XS only
- **Also available in children's sizes, code 273B - page 97**

Black BCK	Bottle Green BGN	Bright Royal BRY	Bright Red BRD	Purple PUR	French Navy FNA	Burgundy BUR
-----------	------------------	------------------	----------------	------------	-----------------	--------------

Fabric	50% combed ringspun Cotton 50% Polyester				
Weight	295g/m <sup>2</sup>				
Size	XS	S	M	L	XL
To Fit (ins)	30-32	32-34	34-36	36-38	38-40
Dress Size	8	10	12	14	16



**Fruit Of The Loom Lady-Fit Hooded Sweat Jacket**

Code: 62924

Weight: 280g/m<sup>2</sup>



- 100% combed, ringspun Cotton facing for enhanced wash and wear performance
- Hood with self-coloured herringbone draw cord
- 2 front pouch pockets
- Covered zip for enhanced printability
- Self-fabric cuffs and waistband
- **Also available in mens sizes, code 62034 - page 78 and children's sizes, code 62035- page 97**



62924

White 30	Black 30	Light Pink SZ	Deep Navy AZ	Sky Blue VT
----------	----------	---------------	--------------	-------------

Fabric	75% Cotton 25% Polyester					
Weight	280g/m <sup>2</sup>					
Size	XS	S	M	L	XL	2XL
Dress Size	8	10	12	14	16	18

**Fruit Of The Loom Lady-Fit Sweat Jacket**

Code: 62002

Weight: 280g/m<sup>2</sup>



- Restyled with a longer body length for an improved fit
- Self-coloured zip with removable branded zip puller
- Self-fabric cuffs and waistband
- Two jetted front pockets
- 100% Ringspun combed cotton facing for enhanced wash and wear performance
- Raglan sleeves with twin needle stitching detail
- Open cuffs and hem
- **Also available in men's sizes, code 62228 - page 79 and children's sizes, 62001- page 97**



62002

White 30	Deep Navy AZ	Black 30	Red 40	Sky Blue VT	Light Pink SZ
----------	--------------	----------	--------	-------------	---------------

Fabric	75% Cotton 25% Polyester					
Weight	280g/m <sup>2</sup>					
Size	XS	S	M	L	XL	2XL
Dress Size	8	10	12	14	16	18

**Fruit Of The Loom Lady-Fit Zip Through Micro Fleece Jacket**

Code: 62558

Weight: 250g/m<sup>2</sup>

- High quality, pill-resistant, breathable, microfleece fabric
- Taped neckline with dyed to match herringbone tape
- Self coloured YKK zip with removable branded zip puller
- Fashionable open hem and cuffs with self coloured binding
- 2 jetted front pockets
- **Also available in men's sizes, code 62608 - page 49**



62558

Sky Blue VT	Black 30	Stone BK	Red 40	Deep Navy AZ
-------------	----------	----------	--------	--------------

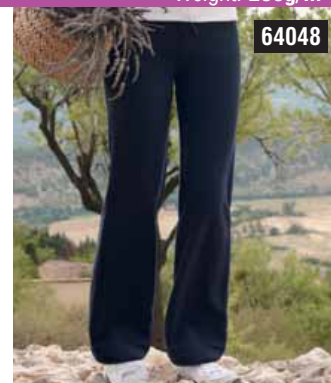
Fabric	100% Polyester pill resistant microfleece					
Weight	250g/m <sup>2</sup>					
Size	XS	S	M	L	XL	
Dress Size	8	10	12	14	16	

**Fruit Of The Loom Lady-Fit Jog Pants**

Code: 64048

Weight: 280g/m<sup>2</sup>

- Replaces the 64044
- Unbrushed fabric for a more feminine fit
- 2 x 1 rib waistband with self coloured herringbone drawcord
- Open cuffs with twin needle stitching detail on the hem
- Complements the Lady-Fit Sweat styles
- **Also available in men's sizes, code 64032 - page 79**



64048

Deep Navy AZ	Black 30	White 30	<b>NEW PRODUCT</b>
--------------	----------	----------	--------------------

Fabric	75% Cotton 25% Polyester					
Weight	280g/m <sup>2</sup>					
Size	XS	S	M	L	XL	
Dress Size	8	10	12	14	16	

**Regatta Ladies Action II Trousers**

Code: J169

Weight: 180g/m<sup>2</sup>



- Water repellent treatment
- Double seat
- Part elasticated waist
- Knee patches
- Belt loops
- Multi pocketed with concealed zips
- Soft Touch fabric
- **Also available in Mens's sizes, code J170 - page 8**



J169

Navy NVY	Black BLK
----------	-----------

Fabric	Polyester/Cotton					
Weight	180g/m <sup>2</sup>					
Leg (ins)	Short 27, Regular 29, Long 31					
Size	10	12	14	16	18	20
Waist (ins)	26	28	30	32	34	36

**Regatta Ladies Lined Action II Trousers**

Code: J173

Weight: 180g/m<sup>2</sup>



- Water repellent finish
- Part elasticated waist
- Double seat
- Knee patches
- Multi pocketed with concealed zips
- Warm scrim lining



J173

Navy NVY	Black BLK	Green GRN
----------	-----------	-----------

Fabric	Polyester/Cotton					
Weight	180g/m <sup>2</sup>					
Leg (ins)	Regular 29, Long 31					
Size	10	12	14	16	18	20
Waist (ins)	26	28	30	32	34	36

**Hanes Stretch Cotton Shorts**

Code: U210

Weight: 195g/m<sup>2</sup>



- 92% pure combed Cotton and 8% Elastane, gives the most comfortable fit possible
- Slim elastic waistband with brand mark tab
- Packed in individual retail boxes

Item non returnable



U210

White WH	Black BK
----------	----------

Fabric	92% pure combed Cotton, 8% Elastane					
Weight	195g/m <sup>2</sup>					
Size	S	M	L	XL		
Dress Size	8-10	12	14	16-18		

**Hanes Stretch Cotton Brief**

Code: U220

Weight: 195g/m<sup>2</sup>



- 92% pure combed Cotton and 8% Elastane, gives the most comfortable fit possible
- Slim elastic waistband with brand mark tab
- Packed in individual retail boxes

Item non returnable



U220

White WH	Black BK
----------	----------

Fabric	92% pure combed Cotton, 8% Elastane					
Weight	195g/m <sup>2</sup>					
Size	S	M	L	XL		
Dress Size	8-10	12	14	16-18		

**Hanes Stretch Cotton String**

Code: **U230**

Weight: **195g/m<sup>2</sup>**

- 92% pure combed Cotton and 8% Elastane, gives the most comfortable fit possible
- Slim elastic waistband with brand mark tab
- Packed in individual retail boxes

Item non returnable

White WH	Black BK			
Fabric	92% pure combed Cotton, 8% Elastane			
Weight	195g/m <sup>2</sup>			
Size	S	M	L	XL
Dress Size	8-10	12	14	16-18



**U230**

**Regatta Ladies Stage Padded Promo Bodywarmer**

Code: **TRA791**

- Thermoguard insulation
- 2 lower pockets
- Adjustable shockcord hem
- **Concealed zip entrance in lining for embroidery access**
- Shaped Fit
- **Also available in Men's sizes, code TRA787 -page 63**

**THERMO GUARD**

Navy NVY	Black BLK	Blue Skies BLS				
Firebrick FBK	Classic Red CSR					
Fabric	100% Polyamide					
Size	8	12	14	16	18	20
To Fit (ins)	32	36	38	40	42	44



**TRA791**

**Jerzees Colours Ladies Full Zip Outdoor Fleece**

Code: **8700F**

Weight: **320g/m<sup>2</sup>**

- Designed to fit and flatter
- To be worn alone or as a warmth layer
- Dense, compact pile for improved wearer warmth
- Cord pulls on all zips
- Contemporary panelled styling
- Cadet collar
- **Also available in Children's sizes, code 8700B - page 98**
- **Also available in Men's sizes, code 8700M - page 50**

Black BLK	Bohls Green BGN	Bright Royal BRV	Burgundy BUR	Classic Red CSR	Conroy Grey CNG
French Navy FNA	Sky SKY	Orange ORA	<b>NEW PRODUCT</b>		

Fabric	100% polyester anti-pill fleece					
Weight	320g/m <sup>2</sup>					
Size	XS	S	M	L	XL	2XL
To Fit (ins)	30-32	32-34	34-36	36-38	38-40	40-42
Dress Size	8	10	12	14	16	18



**8700F**

**Grizzly® Ladies Full Zip Active Fleece**

Code: **KK904**

Weight: **300g/m<sup>2</sup>**

- Taped reinforced shoulder seams
- Twin needle stitched hem & cuffs
- Twin needle overlocking throughout
- Grizzly woven zip pulls
- Full size zipped pockets for security
- **Also available in men's sizes, code KK903 -page 49**

Navy NVY	Black BLK	<b>ANTARCTEC™</b>		
Fabric	100% Spun Polyester			
Weight	300g/m <sup>2</sup>			
Size	S	M	L	XL
To Fit (ins)	10	14	18	22



**KK904**

**Result La Femme® Semi-Micro Fleece Jacket**

Code: **R85F**

Weight: **300g/m<sup>2</sup>**

- Anti pilling
- Lightweight
- Shaped front panels with fitted styling
- Stretchy fit
- Extra warmth
- Full front zip fastening
- 2 side pockets with stitch feature
- 10cm side zip adjuster
- RESULT metallic pullers to front and side zips
- Zip through mock collar

Black	Navy	Grey Mist	Iris Blue
Ivory	Red	Lavender	

Outer	100% Polyester					
Inner	300g/m <sup>2</sup> Semi-Micro Active Fleece by RESULT					
Size	XS	S	M	L	XL	2XL
Dress Size	8	10	12	14	16	18



**R85F**

**Regatta Ladies Thor III Fleece**

Code: **TRF541**

Weight: **280g/m<sup>2</sup>**

- 280 series anti-pill Symmetry fleece
- Fleece cuffs
- 2 zipped lower pockets
- Adjustable shockcord hem
- Interactive with Ladies Stance jacket, see page 91
- Shaped fit
- **Also available in mens sizes, code - TRF532 - page 49**
- **Also available in children's sizes, code TRF542 - page 98**

Classic Red CSR	Dark Navy DKN	Black BLK	Blue Skies BSY	Royal ROY	Bohls Green BGN	
Fabric	280 series anti-pill Symmetry fleece					
Weight	280g/m <sup>2</sup>					
Size	10	12	14	16	18	20
To Fit (ins)	34	36	38	40	42	44



**TRF541**

**Result La Femme® High Grade Microfleece Jacket**

Code: **R115F**

- OkeoTex Standard
- 280g/m<sup>2</sup> Polyester high grade Microfleece
- Soft athletic 2 way stretch fabric
- Quick drying
- Fashionable shaped longer back panel
- Decorative collar piping and arm stitching
- Taped neck seams
- Full front zip fastening
- 2 zip closing side pockets
- Lightweight
- Ideal as a layer garment
- Good warmth factor when worn as a layer
- Warmth Filament Gauge (144)

Black	Navy	Dark Grey	Cardinal Red
-------	------	-----------	--------------

Fabric	see bullets				
Size	XS	S	M	L	XL
Dress Size	8	10	12	14	16



**R115F**

**STORMTECH Ladies Triton H2XTREME™ Shell Jacket**

Code: **T-1W**

Weight: **155g/m<sup>2</sup>**

- Waterproof 10,000mm
- Breathable 5,000g/m<sup>2</sup>
- Laser cut and bonded chest arm pockets with waterproof zippers
- Laminated front placket, cuffs & hood brim
- Fully seam sealed
- Transparent ID pass-pocket on left sleeve
- Removable, adjustable articulated hood
- Extra long under-arm ventilation zips
- Articulated, engineered elbows for maximum mobility
- **Also available in men's sizes, code T-1M - page 55**

Black BLK	Navy NVY	Red RED		
Greystone GST	Greystone GST	Greystone GST		
Shell	100% Nylon, 155gms			
Lining	Fully lined with Tricot and Taffeta			
Size	S	M	L	XL
To Fit (ins)	32-35	35-38	38-41	41-44



**T-1W**

**STORMTECH Ladies Nova Storm Shell System Jacket**

Code: XR-4W

- H2X® waterproof and breathable technology
- Waterproof: 2,000mm. Breathable 1,000g/m<sup>2</sup>/24hrs
- Fully seam sealed oxford nylon outshell, 180g/m<sup>2</sup>
- Adjustable velcro® closure cuffs
- Zip out 100% polyester microfleece liner/jacket, 240g/m<sup>2</sup>
- Removable adjustable hood
- Full length storm flap and draught guard
- Zipped inside security pockets
- **Also available in men's sizes, code XR-4 - page 55**



Black BLK	Navy Nvy			
Granite GRA	Granite GRA			
Fabric	see bullet points			
Weight	see bullet points			
Size	S	M	L	XL
To Fit (ins)	32-35	35-38	38-41	41-44

**STORMTECH Ladies Polaris H2X™ Fleece Shell Jacket**

Code: BWJ-2W

Weight: 300g/m<sup>2</sup>

- Water resistant: 8,000mm. Breathable 3,000g/m<sup>2</sup>/24hrs
- 100% anti-pill polyester microfleece, 300g/m<sup>2</sup>
- Bonded to a waterproof membrane
- Zippered hand warmer pocket
- Inside draft flap
- Adjustable drawcord waist
- Bonded mesh back
- Contrast sleeve and side panel
- **Also available in men's sizes, code - BWJ-2 - page 47**



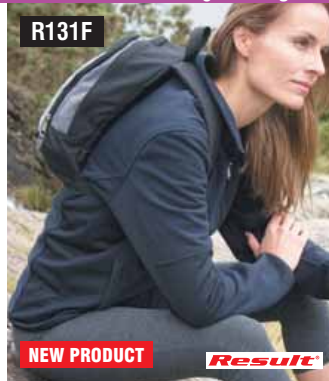
Black BLK	Red RED	Ivory Ivr		
Steel Grey STG	Black BLK	Black BLK		
Fabric	see bullet points			
Weight	300g/m <sup>2</sup>			
Size	S	M	L	XL
To Fit (ins)	32-35	35-38	38-41	41-44

**Result La Femme® Osaka TECH Performance Combed Pile Soft Shell Jacket**

Code: R131F

Weight: 370g/m<sup>2</sup>

- Water repellent Breathable 3,000mvp Windproof
- TECH Performance Soft Shell Technology
- Outer: 370g/m<sup>2</sup>, 3 layer Waterproof 7,000mm bonded fabric:
  - Outer-layer: T750D/144F Polyester combed pile Soft-Shell
  - Mid-layer: TPU Waterproof, Breathable & Windproof membrane
  - Inner-layer: Polyester/Spandex mesh
- Soft athletic 3 way stretch fabric
- Quick drying
- Comfort fit
- TECH Performance blind stamp



Black	Navy	Red	Forest Green		
Outer	see bullet points				
Weight	370g/m <sup>2</sup>				
Size	XS	S	M	L	XL
Dress Size	8	10	12	14	16

**Jerzees Colours Ladies Soft Shell Jacket**

Code: 140F

Weight: 340g/m<sup>2</sup>

- Attractive all round soft shell jacket
- Designed for versatility and flexible use
- Water resistant to 5000mm
- Breathable
- Bonded microfleece lining
- Fully launderable: 40°C wash and low temperature tumble dry (do not use fabric softeners)
- Fitted shape for feminine waist
- **Also available in men's sizes, code 140M - page 53**
- **Also available in children's sizes, code 140B - page 98**



Black BLK	Cactus CAC	Classic Red CSR	French Navy FNA	Azure AZR	Titanium TIT
Fabric	92% Polyester, 8% Elastane 3 layer soft shell				
Weight	340g/m <sup>2</sup>				
Size	XS	S	M	L	XL
To Fit (ins)	30-32	32-34	34-36	36-38	38-40
Dress Size	8	10	12	14	16

**Result La Femme® Soft Shell Jacket**

Code: R122F

Weight: 345g/m<sup>2</sup>

- RESULT Breathable weatherproof technology
- 345g/m<sup>2</sup> Soft Shell 3 layer 8,000mm waterproof bonded fabric
- Showerproof
- Breathable
- Windproof
- Soft high stretch fabric
- Comfortable active cut
- Shaped panels for fitted styling



Zip off collar variations		Zip off collar variations	
Black	Sky	Orange	Navy
Black	Red	Red	Black
Navy	Navy	Sky	Orange
Navy	Sky	Orange	Black
Outer	93% Polyester, 7% Elastane		
Inner	TPU breathable membrane*		
Size	XS	S	M
Dress Size	8	10	12

\*Inner-layer: Microfleece for extra warmth

**STORMTECH Women's Horizon Shell Jacket**

Code: ESX-2W

Weight: 107g/m<sup>2</sup>

- Stormtech D/W/R durable water resistant nylon taslan outshell, 107g/m<sup>2</sup>
- Inside mobile phone pocket
- Zippered front pockets
- Adjustable Velcro® cuffs
- Adjustable elastic drawcord hem
- Fully lined with mesh & taffeta
- Zippered inside security pocket
- Stand-up collar
- **Also available in men's sizes, ESX-2 - page 58**



Black BLK	Navy Nvy			
Fabric	see bullet points			
Weight	107g/m <sup>2</sup>			
Size	S	M	L	XL
To Fit (ins)	32-35	35-38	38-41	41-44

**Regatta Ladies Upoar Softshell**

Code: TRA645

- Warm backed woven stretch softshell fabric
- Durable water repellent finish
- Wind resistant
- Quick drying fabric
- Super soft handle
- 2 zippered lower pockets
- Adjustable shockcord hem
- Interactive with Ladies Stance jacket, see page 91
- Lightweight and easy to wear
- Shaped fit
- **Also available in mens sizes, code TRA642 - page 53**



Navy Nvy	Black BLK	Classic Red CSR			
Navy Nvy	Seal Grey SEG	Seal Grey SEG			
Fabric	Classic Weight Softshell				
Size	10	12	14	16	18
To Fit (ins)	34	36	38	40	42

\* Size 20 only available in Navy and Black

**STORMTECH Women's Eclipse Bonded Fleece Shell Jacket**

Code: BMF-1W

Weight: 306g/m<sup>2</sup>

- 100% Polyester anti-pill microfleece, 306g/m<sup>2</sup>
- Front on-seam pockets
- Contrast colours panels along shoulder and arm
- Contrast piping
- Adjustable drawcord hem
- **Also available in men's sizes, code BMF-1 - page 47**



Black BLK	Red RED	Navy Nvy	Reverse Blue RBL		
Granite GRA	Granite GRA	Granite GRA	Granite GRA		
Fabric	100% Polyester Bonded Micro Fleece				
Weight	306g/m <sup>2</sup>				
Size	S	M	L	XL	
To Fit (ins)	32-35	35-38	38-41	41-44	

**Result La Femme® 2 Layer Base Soft-Shell Jacket**

Code: R128F

- Result®** **NEW PRODUCT**
- Soft Shell Technology
  - 200g/m<sup>2</sup>, 2 layer bonded fabric
  - Outer-layer: 93% Polyester and 7% Spandex
  - Inner-layer: 100% Polyester sport mesh
  - Water repellent, breathable, wind resistant
  - Soft athletic 2 way stretch fabric
  - Quick drying
  - Comfort fit
  - Concealed inner storm flap
  - 2 zip closing side pockets and 1 front zip closing chest pocket
  - Tear release adjustable cuffs
  - Ideal lightweight layer garment



R128F

Fabric	see bullets					
Size	XS	S	M	L	XL	2XL
Dress Size	8	10	12	14	16	18

**STORMTECH Womens Epsilon H2xtreme™ Shell**

Code: HS-1W

Weight: 300g/m<sup>2</sup>

- Laser-cut and bonded arm pocket with waterproof zippers
- Water resistant: 8,000mm. Breathable: 5,000g/m<sup>2</sup>/24hrs
- Ripstop Fabrication (95% Nylon, 5% Spandex), Bonded with Matrix Microfleece
- Reversed-tape front zippers with full-length inner storm flap
- Chest pocket with audio port
- Adjustable drawcords at hem
- **Also available in men's sizes, code HS-1 - page 55**



HS-1W

Chalk White DWR	Cool Blue CLB	Black BLK		
Fabric see bullet points				
Weight	300g/m <sup>2</sup>			
Size	S	M	L	XL
To Fit (ins)	32-35	35-38	38-41	41-44

**STORMTECH Ladies Fleet Convertible Jacket**

Code: CMX-1W

- STORMTECH**
- Fully reversible
  - Stormtech D/W/R durable water resistant polyester micro ripstop outershell 105g/m<sup>2</sup>
  - 100% polyester anti-pill microfleece, 190g/m<sup>2</sup>
  - Zippered front pockets
  - Zip-off sleeves
  - Stand-up storm collar
  - Adjustable elastic drawcord hem
  - **Also available in mens sizes, code CMX-1 - page 56**



CMX-1W

Fabric	see bullet points			
Weight	see bullet points			
Size	S	M	L	XL
To Fit (ins)	32-35	35-38	38-41	41-44

**STORMTECH Ladies Microfleece Lined Jacket**

Code: XF-1W

- STORMTECH**
- Stormtech D/W/R durable water resistant tadelactel nylon outshell, 135g/m<sup>2</sup>
  - Polyester micro fleece anti-pill lining, 265g/m<sup>2</sup>
  - Full length interior draft flap
  - Zippered front pockets
  - Adjustable Velcro® closure cuff
  - Large capacity hand warmer pockets
  - Elastic drawcord hem
  - Interior mobile phone pocket
  - **Also available in mens sizes, code XF-1 - page 56**



XF-1W

Shell	see bullet points			
Lining	100% Polyester Microfleece			
Size	S	M	L	XL
To Fit (ins)	32-35	35-38	38-41	41-44

**STORMTECH Ladies Bonded Jacket**

Code: CXJ-1W

Weight: 340g/m<sup>2</sup>

- STORMTECH**
- Teflon® DWR wind/water repellent polyester spandex shell bonded with microfleece
  - 92% Polyester 8% Spandex Bonded with 100% Polyester Microfleece, 340gms, Teflon DWR Finish
  - Mid-length jacket
  - Vertical chest zippered pocket with double welt
  - Stand-up collar
  - Open hem with drawcord
  - **Also available in mens sizes, CXJ-1, page 56**



CXJ-1W

Fabric	see bullet points			
Weight	340g/m <sup>2</sup>			
Size	S	M	L	XL
To Fit (ins)	32-35	35-38	38-41	41-44

**Regatta Ladies Darby II Jacket**

Code: TRA355

- Waterproof Hydrafort peached polyester fabric
- Windproof fabric
- Thermoguard insulation
- Taped seams
- Concealed hood with adjuster
- 2 lower pockets with zipped handwarmers
- Mobile phone pocket
- Adjustable cuffs
- Inner security pocket and zipped chest pocket
- Shaped fit
- **Concealed zip entrance in lining for embroidery access**
- **Also available in men's sizes, code TRA354 - page 57**



TRA355

Fabric	Waterproof Hydrafort Peached Polyester					
Size	10	12	14	16	18	20
To Fit (ins)	34	36	38	40	42	44

**Regatta Ladies Stance Jacket**

Code: TRW414

- Waterproof and breathable Isotex coated taslan fabric
- Windproof fabric
- Taped seams
- Mesh lined upper body
- Concealed hood with adjuster
- Adjustable cuffs
- 2 zipped lower and 1 zipped chest pocket
- Internal mobile phone pocket
- Adjustable shockcord hem, hood and waist
- **Concealed zip entrance in lining for embroidery access**
- **Also available in mens sizes, code TRW413 - page 57**



TRW414

Fabric	Waterproof & breathable Isotex coated Taslan				
Size	10	12	14	16	18
To Fit (ins)	34	36	38	40	42

**Jerzees Colours Ladies Hydraplus 2000 Jacket**

Code: 510F

Weight: 190g/m<sup>2</sup>

- Water resistant to 2000mm
- Breathable: 2000 g/m<sup>2</sup> per 24 hours
- Critically taped seams
- PU coating and water repellent finish
- Active fit: articulated elbows and raglan sleeves
- Storm flap with rain channel
- Reversed zips and soft touch inner collar
- Concealed 3 piece hood
- **Also available in Children's sizes, code 510B - page 99**
- **Also available in Men's sizes, code 510M - page 58**



510F

Fabric	100% nylon taslan					
Weight	190g/m <sup>2</sup>					
Size	XS	S	M	L	XL	2XL
To Fit (ins)	30-32	32-34	34-36	36-38	38-40	40-42
Dress Size	8	10	12	14	16	18

**Regatta Ladies Hudson Jacket**

Code: TRA306

- Waterproof Hydrafort polyester matrix dobby fabric
- Windproof fabric
- 200 series anti-pill symmetry fleece lining
- Taped seams
- Fleece lined collar
- Concealed hood with adjuster
- Adjustable cuffs
- Mobile phone pocket
- **Concealed zip entrance in lining for embroidery access**
- **Also available in men's sizes, code TRA301 - page 58**



Out Fab	Waterproof Hydrafort polyester matrix dobby				
Inn Fab	200 series anti-pill Symmetry fleece				
Size	10	12	14	16	18
To Fit (ins)	34	36	38	40	42

**STORMTECH Womens Five-in-One Parka**

Code: VPX-4W

- Waterproof: 5,000mm. Breathable: 3,000g/m<sup>2</sup>/24hrs
- Fully seam sealed, 100% polyester outshell, 182gms
- 100% polyester micro ripstop, 115gms Taffeta lining
- Centre front placket with elastic gusset, snaps and velcro
- Chest & upper sleeve yokes
- Front welted panels with upper & lower pockets
- Underarm zippered vents
- Inside zippered pocket
- **Also available in men's sizes, code VPX-4 - page 63**



Fabric	see bullet points				
Size	S	M	L	XL	2XL
To Fit (ins)	32-35	35-38	38-41	41-44	50-53

**Regatta Ladies Benson II 3 In 1 Jacket**

Code: TRA123

- Waterproof and breathable Isotex coated taslan fabric
- Windproof fabric
- Taped seams
- Mesh lined upper body
- Adjustable cuffs
- Concealed hood with adjuster
- Studded stormflap
- **Concealed zip entrance in lining for embroidery access**
- **Also available in men's sizes, code TRA122 - page 63**



Out Fab	Waterproof & Breathable Isotex coated Taslan				
Inn Fab	200g/m <sup>2</sup> Symmetry fleece				
Size	10	12	14	16	18 20
To Fit (ins)	34	36	38	40	42 44

# Childrens

pages: 93-94



WOMENS

