



**KUSTOM KIT®**

KK100 MEN'S WORKFORCE SHIRT

### Kustom Kit Men's Long Sleeve Corporate Oxford Shirt

Code: **KK105**

Weight: 125g/m<sup>2</sup>

#### KUSTOM KIT.

- Finest quality and value Oxford shirt
- Button down fused collar
- Breast pocket
- Shirt tail bottom
- 2 Spare buttons
- Double folded seams
- Hanger loop on reverse
- **Also available in ladies sizes, code KK702 - page 43**



White WTE	Light Blue LBL	Royal RYL	Black BLK	Red RED
Silver Grey SLC	Lemon LMN	Midnight Navy MID	Bottle Green BGR	Burgundy BUR
			Charcoal CCL	

Fabric	85% Cotton 15% Polyester
Weight	125g/m <sup>2</sup>
Neck (ins)	14" 15 15" 16 16" 17 17" 18 18" 19 20 21
*Sizes 20-21 only available in White and Light Blue	



**KK105**

### Kustom Kit Men's Short Sleeve Corporate Oxford Shirt

Code: **KK109**

Weight: 125g/m<sup>2</sup>

#### KUSTOM KIT.

- Finest quality and value Oxford shirt
- Button down fused collar
- Breast pocket
- Shirt tail bottom
- 2 Spare buttons
- Double folded seams
- Hanger loop on reverse
- **Also available in ladies sizes, code KK701 - page 43**



White WTE	Light Blue LBL	Royal RYL	Black BLK	Red RED	Libe LLC	Mid Blue MBL
Silver Grey SLC	Lemon LMN	Midnight Navy MID	Bottle Green BGR	Burgundy BUR	Charcoal CCL	

Fabric	85% Cotton 15% Polyester
Weight	125g/m <sup>2</sup>
Neck (ins)	14" 15 15" 16 16" 17 17" 18 18" 19 20 21
*Sizes 20-21 only available in White and Light Blue	



**KK109**

### Fruit Of The Loom Men's Short Sleeve Oxford Shirt

Code: **65112**

Weight: 130-135g/m<sup>2</sup>



FRUIT OF THE LOOM



- Classic Oxford styling with pearl buttons and button-down collar
- Mitred chest pocket
- **Also available in ladies sizes, code 65000 - page 42**

White 30	Navy 32	Oxford Grey 02
Atlantic Blue 02	Oxford Blue 03	Black 38

Fabric	70% Cotton, 30% Polyester
Weight	130-135g/m <sup>2</sup>
Size	S M L XL 2XL 3XL
Neck (ins)	14 <sup>1/2</sup> -15 15 <sup>1/2</sup> 16-16 <sup>1/2</sup> 17-17 <sup>1/2</sup> 18 18 <sup>1/2</sup> -19



**65112**

### Fruit Of The Loom Men's Long Sleeve Oxford Shirt

Code: **65114**

Weight: 130-135g/m<sup>2</sup>



FRUIT OF THE LOOM



- Classic Oxford styling with pearl buttons and button-down collar
- Mitred chest pocket and cuffs
- **Also available in ladies sizes, code 65002 - page 42**

White 30	Navy 32	Oxford Grey 02
Atlantic Blue 02	Oxford Blue 03	Black 38

Fabric	70% Cotton, 30% Polyester
Weight	130-135g/m <sup>2</sup>
Size	S M L XL 2XL 3XL
Neck (ins)	14 <sup>1/2</sup> -15 15 <sup>1/2</sup> 16-16 <sup>1/2</sup> 17-17 <sup>1/2</sup> 18 18 <sup>1/2</sup> -19



**65114**

**Russell Collection Men's Long Sleeve Easy Care Oxford Shirt**

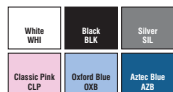
Code: 932M

Weight: 130-135g/m<sup>2</sup>



932M

- Classic oxford shirt in easy care fabric
- A 'must-have' for every workplace
- Button down collar
- Back yoke with 2 side pleats
- Rounded 2 button adjustable cuff plus single button on cuff gauntlet
- Single pocket over left chest
- Rounded hem



Fabric	70% Cotton, 30% Polyester
Weight	130-135g/m <sup>2</sup>
Neck (ins)	14 <sup>1/2</sup> -15 15 <sup>1/2</sup> -16 16 <sup>1/2</sup> -17-17 <sup>1/2</sup> 18 18 <sup>1/2</sup> -19 19 <sup>1/2</sup> 20 21
Chest (ins)	36-38 38-40 40-42 42-44 44-46 46-48 48-50 50-50 52-54



**Russell Collection Men's Short Sleeve Easy Care Oxford Shirt**

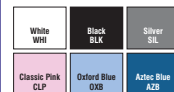
Code: 933M

Weight: 130-135g/m<sup>2</sup>



933M

- Classic Oxford shirt in easy care fabric
- A 'must-have' for every workplace
- Button down collar
- Back yoke with 2 side pleats
- Single pocket over left chest
- Rounded hem



Fabric	70% Cotton, 30% Polyester
Weight	130-135g/m <sup>2</sup>
Neck (ins)	14 <sup>1/2</sup> -15 15 <sup>1/2</sup> -16 16 <sup>1/2</sup> -17-17 <sup>1/2</sup> 18 18 <sup>1/2</sup> -19 19 <sup>1/2</sup> 20 21
Chest (ins)	36-38 38-40 40-42 42-44 44-46 46-48 48-50 50-50 52-54



**Dickies Long Sleeve Cotton/Polyester Oxford Shirt**

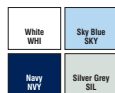
Code: SH64200

Weight: 135g/m<sup>2</sup>



SH64200

- Long sleeve
- One chest pocket
- Button-down collar
- Easy care
- Classic styling
- **Also available in ladies sizes, code SH64300 - page 44**



Fabric	70% Cotton 30% Polyester
Weight	135g/m <sup>2</sup>
To Fit (ins)	15 15 <sup>1/2</sup> 16 16 <sup>1/2</sup> 17 17 <sup>1/2</sup> 18 18 <sup>1/2</sup> 19 19 <sup>1/2</sup> 20
*Sizes 18 <sup>1/2</sup> -20 only available in Sky Blue and White	



**Dickies Short Sleeve Cotton/Polyester Oxford Shirt**

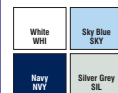
Code: SH64250

Weight: 135g/m<sup>2</sup>



SH64250

- Short sleeve
- One chest pocket
- Button down collar
- Easy care
- Classic styling
- **Also available in ladies sizes, code SH64350 - page 44**



Fabric	70% Cotton 30% Polyester
Weight	135g/m <sup>2</sup>
To Fit (ins)	15 15 <sup>1/2</sup> 16 16 <sup>1/2</sup> 17 17 <sup>1/2</sup> 18 18 <sup>1/2</sup> 19 19 <sup>1/2</sup> 20
*Sizes 18 <sup>1/2</sup> -20 only available in Sky Blue and White	



**Kustom Kit Men's Workwear Pinpoint Oxford Short Sleeve Shirt**

Code: KK350

Weight: 135g/m<sup>2</sup>

KUSTOM KIT.

KK350

- Button-down fused collar
- Breast pocket
- Double folded seams
- Shirt tail bottom
- Two pleats at back
- Two spare buttons
- **Also available in ladies sizes, code KK360 page 42**



Fabric	70% Cotton 30% Polyester
Weight	135g/m <sup>2</sup>
Neck (ins)	14 <sup>1/2</sup> 15 15 <sup>1/2</sup> 16 16 <sup>1/2</sup> 17 17 <sup>1/2</sup> 18 18 <sup>1/2</sup>



**Kustom Kit Men's Workwear Oxford Long Sleeve Shirt**

Code: KK351

Weight: 135g/m<sup>2</sup>

KUSTOM KIT.

KK351

- Button-down fused collar
- Breast pocket
- Double folded seams
- Adjustable cuffs
- Shirt tail bottom
- Two pleats at back
- Two spare buttons
- **Also available in ladies sizes, code KK361 - page 43**



Fabric	70% Cotton 30% Polyester
Weight	135g/m <sup>2</sup>
Neck (ins)	14 <sup>1/2</sup> 15 15 <sup>1/2</sup> 16 16 <sup>1/2</sup> 17 17 <sup>1/2</sup> 18 18 <sup>1/2</sup>



**Fruit Of The Loom Men's Short Sleeve Poplin Shirt**

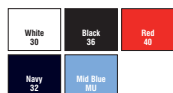
Code: 65116

Weight: 115-120g/m<sup>2</sup>



65116

- Standard collar and self-fabric chest pocket
- Self-coloured buttons
- **Also available in ladies sizes, code 65014 - page 43**



Fabric	55% Cotton, 45% Polyester
Weight	115-120g/m <sup>2</sup>
Size	S M L XL 2XL 3XL
Neck (ins)	14 <sup>1/2</sup> -15 15 <sup>1/2</sup> 16-16 <sup>1/2</sup> 17-17 <sup>1/2</sup> 18 18 <sup>1/2</sup> -19



**Fruit Of The Loom Men's Long Sleeve Poplin Shirt**

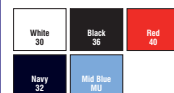
Code: 65118

Weight: 115-120g/m<sup>2</sup>



65118

- Standard collar and self-fabric chest pocket
- Self-coloured buttons
- **Also available in ladies sizes, code 65012 - page 43**



Fabric	55% Cotton, 45% Polyester
Weight	115-120g/m <sup>2</sup>
Size	S M L XL 2XL 3XL
Neck (ins)	14 <sup>1/2</sup> -15 15 <sup>1/2</sup> 16-16 <sup>1/2</sup> 17-17 <sup>1/2</sup> 18 18 <sup>1/2</sup> -19



## Russell Collection Men's Long Sleeve Poly-Cotton Easy Care Poplin Shirt

Code: 934M

Weight: 100-110g/m<sup>2</sup>

934M

- Smart corporate shirt in classic poplin fabric
- Durable and ideal for hard-wearing applications
- True easy care fabric requires minimum ironing
- Classic style boned collar
- Rounded 2 button adjustable cuff plus single button on cuff gauntlet
- Single pocket over left chest
- Straight bottom hem
- **Also available in Ladies sizes, code 934F - page 42**



Fabric	35% Cotton Blend, 65% Polyester				
Weight	100-110g/m <sup>2</sup>				
Neck (ins)	14 <sup>1</sup> / <sub>2</sub>	15 <sup>1</sup> / <sub>2</sub>	16-16 <sup>1</sup> / <sub>2</sub>	17-17 <sup>1</sup> / <sub>2</sub>	18 18 <sup>1</sup> / <sub>2</sub> -19 19 <sup>1</sup> / <sub>2</sub>
Chest (ins)	36-38	38-40	40-42	42-44	44-46 46-48 48-50



## Russell Collection Men's Short Sleeve Poly-Cotton Easy Care Poplin Shirt

Code: 935M

Weight: 100-110g/m<sup>2</sup>

935M

- Smart corporate shirt in classic poplin fabric
- Durable and ideal for hard-wearing applications
- True easy care fabric requires minimum ironing
- Classic style boned collar
- Single pocket over left chest
- Straight bottom hem
- **Also available in Ladies sizes, code 935F - page 42**



Fabric	35% Cotton Blend, 65% Polyester				
Weight	100-110g/m <sup>2</sup>				
Neck (ins)	14 <sup>1</sup> / <sub>2</sub>	15 <sup>1</sup> / <sub>2</sub>	16-16 <sup>1</sup> / <sub>2</sub>	17-17 <sup>1</sup> / <sub>2</sub>	18 18 <sup>1</sup> / <sub>2</sub> -19 19 <sup>1</sup> / <sub>2</sub>
Chest (ins)	36-38	38-40	40-42	42-44	44-46 46-48 48-50



## Kustom Kit Men's Short Sleeve Business Shirt

Code: KK102

Weight: 105g/m<sup>2</sup>

KUSTOM KIT.

KK102

- Easy care business short sleeve shirt
- Classic fused collar
- Breast pocket
- Shirt tail bottom
- Spare button
- Double folded seams
- Comfort finished cuff seams
- **Also available in Ladies sizes, code KK742 -page 44**



e.o.sy

Fabric	55% Cotton 45% Polyester				
Weight	105g/m <sup>2</sup>				
Neck (ins)	14 <sup>1</sup> / <sub>2</sub>	15 15 <sup>1</sup> / <sub>2</sub>	16 16 <sup>1</sup> / <sub>2</sub>	17 17 <sup>1</sup> / <sub>2</sub>	18 18 <sup>1</sup> / <sub>2</sub> 19
*19 in White, Black & Light Blue only					



## Kustom Kit Men's Long Sleeve Business Shirt

Code: KK104

Weight: 105g/m<sup>2</sup>

KUSTOM KIT.

KK104

- Easy care long sleeve business shirt
- Classic fused collar
- Breast pocket
- Shirt tail bottom
- Spare button
- Double folded seams
- Adjustable cuffs
- Option for cuff links
- **Also available in Ladies sizes, code KK743 -page 44**



e.o.sy

Fabric	55% Cotton 45% Polyester				
Weight	105g/m <sup>2</sup>				
Neck (ins)	14 <sup>1</sup> / <sub>2</sub>	15 15 <sup>1</sup> / <sub>2</sub>	16 16 <sup>1</sup> / <sub>2</sub>	17 17 <sup>1</sup> / <sub>2</sub>	18 18 <sup>1</sup> / <sub>2</sub> 19



## Kustom Kit Men's Tailored Fit Long Sleeved Business Shirt

Code: KK131

Weight: 105g/m<sup>2</sup>

KUSTOM KIT.

KK131

- Semi cut away collar
- Removeable collar bones
- Easy Iron
- Double button cuffs
- Double folded side and sleeve seams
- Shirt Tail bottom
- Spare Button

e.o.sy



NEW PRODUCT

Fabric	55% Cotton/45% Polyester				
Weight	105g/m <sup>2</sup>				
Neck (ins)	14 <sup>1</sup> / <sub>2</sub>	15 15 <sup>1</sup> / <sub>2</sub>	16 16 <sup>1</sup> / <sub>2</sub>	17 17 <sup>1</sup> / <sub>2</sub>	18 18 <sup>1</sup> / <sub>2</sub>



## Kustom Kit Double Cuff Long Sleeved Business Shirt

Code: KK132

Weight: 105g/m<sup>2</sup>

KUSTOM KIT.

KK132

- Modern collar
- Removeable collar bones
- Adjustable turn back cuffs
- Mock cuff links
- Buttoned sleeve placket
- Easy iron
- Double folded side and sleeve seams
- Shirt tail bottom
- Spare buttons
- Easy Iron

e.o.sy



NEW PRODUCT

Fabric	55% Cotton/45% Polyester				
Weight	105g/m <sup>2</sup>				
Neck (ins)	15 15 <sup>1</sup> / <sub>2</sub>	16 16 <sup>1</sup> / <sub>2</sub>	17 17 <sup>1</sup> / <sub>2</sub>	18 18 <sup>1</sup> / <sub>2</sub>	



## Kustom Kit Men's Workforce Short Sleeve Shirt

Code: KK100

Weight: 115g/m<sup>2</sup>

KUSTOM KIT.

KK100

- Button-down collar
- **Optional chest pocket**
- Double folded seams
- Shirt tail bottom
- Two spare buttons
- **Also available in ladies sizes, code KK728 - page 45**



e.o.sy

Fabric	65% Polyester 35% Cotton				
Weight	115g/m <sup>2</sup>				
Size	S	M	L	XL	2XL
Chest (ins)	38	40	42	44	46-48
Neck (ins)	14 <sup>1</sup> / <sub>2</sub>	15-15 <sup>1</sup> / <sub>2</sub>	16-16 <sup>1</sup> / <sub>2</sub>	17-17 <sup>1</sup> / <sub>2</sub>	18-18 <sup>1</sup> / <sub>2</sub>



## Kustom Kit Men's Premium Non Iron Short Sleeve Shirt

Code: KK115

Weight: 125g/m<sup>2</sup>

KUSTOM KIT.

KK115

- Fused modern collar
- Chest pocket
- Double folded side seams
- Shirt tail bottom
- Spare button



Fabric	100% Cotton - non iron				
Weight	125g/m <sup>2</sup>				
Neck (ins)	14 <sup>1</sup> / <sub>2</sub>	15 15 <sup>1</sup> / <sub>2</sub>	16 16 <sup>1</sup> / <sub>2</sub>	17 17 <sup>1</sup> / <sub>2</sub>	18 18 <sup>1</sup> / <sub>2</sub>



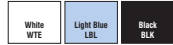
**Kustom Kit Mens Executive Oxford Short Sleeved Shirt**

Code: **KK117**

Weight: 125g/m<sup>2</sup>

**KUSTOM KIT.**

- Modern collar
- Wrinkle free taping in seams
- Easy Iron
- Optional Pocket
- Double folded side and sleeve seams
- Two pleats at back
- Shirt Tail bottom
- Spare Button
- Removable collar bones



Fabric	85% Cotton, 15% Polyester							
Weight	125g/m <sup>2</sup>							
Neck (ins)	15	15 <sup>1/2</sup>	16	16 <sup>1/2</sup>	17	17 <sup>1/2</sup>	18	18 <sup>1/2</sup>



**KK117**

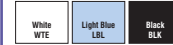
**Kustom Kit Mens Executive Oxford Long Sleeved Shirt**

Code: **KK118**

Weight: 125g/m<sup>2</sup>

**KUSTOM KIT.**

- Modern collar
- Wrinkle free taping in seams
- Easy iron
- Optional pocket
- Double button cuff
- Double folded side and sleeve seams
- Two pleats at back
- Shirt tail bottom
- Spare button.
- Removable collar bones



Fabric	85% Cotton 15% Polyester							
Weight	125g/m <sup>2</sup>							
Neck (ins)	15	15 <sup>1/2</sup>	16	16 <sup>1/2</sup>	17	17 <sup>1/2</sup>	18	18 <sup>1/2</sup>



**KK118**

**Kustom Kit Ladies 3/4 Sleeve Business Shirt**

Code: **KK744**

Weight: 105g/m<sup>2</sup>

**KUSTOM KIT.**

- Soft Fused collar
- Easy iron
- Double folded side and sleeve seams
- Turn back cuffs
- Single needle stitched yoke and armholes
- Shirt tail bottom
- Two spare buttons



**NEW PRODUCT**

Fabric	55% Cotton 45% Polyester						
Weight	105g/m <sup>2</sup>						
Dress Size	10	12	14	16	18	20	
Bust	32	34	36	38	40	42	



**KK744**

**Fruit Of The Loom Lady Fit Short Sleeve Oxford Shirt**

Code: **65000**

Weight: 130-135g/m<sup>2</sup>



- Shaped side seams
- Back and bust darts for enhanced comfort and a feminine fit
- Pearl buttons
- **Also available in men's sizes, code 65112 - page 39**



Fabric	70% Cotton, 30% Polyester						
Weight	130-135g/m <sup>2</sup>						
Size	XS	S	M	L	XL	2XL	3XL
Dress Size	8	10	12	14	16	18	20



**65000**

**Fruit Of The Loom Lady-Fit Long Sleeve Oxford Shirt**

Code: **65002**

Weight: 130-135g/m<sup>2</sup>



- Shaped side seams
- Back and bust darts for enhanced comfort and a feminine fit
- Pearl buttons
- **Also available in men's sizes, code 65114 - page 39**



Fabric	70% Cotton, 30% Polyester						
Weight	130-135g/m <sup>2</sup>						
Size	XS	S	M	L	XL	2XL	3XL
Dress Size	8	10	12	14	16	18	20



**65002**

**Russell Collection Ladies Long Sleeve Poly-Cotton Easy Care Poplin Shirt**

Code: **934F**

Weight: 100-110g/m<sup>2</sup>



- Smart corporate shirt in classic poplin fabric
- Durable and ideal for hard-wearing applications
- True easy care fabric requires minimum ironing
- Classic single-button collar
- Rounded 2 button adjustable cuffs
- Single pocket over left chest
- Rounded hem
- **Also available in Mens sizes, code 934M -page 41**



Fabric	65% Polyester 35% Cotton Blend							
Weight	100-110g/m <sup>2</sup>							
Size	XS	S	M	L	XL	2XL	3XL	4XL
To Fit (ins)	30-32	32-34	34-36	36-38	38-41	41-44	44-47	47-51
Dress Size	8	10	12	14	16	18	20	22



**934F**

**Russell Collection Ladies Short Sleeve Poly-Cotton Easy Care Poplin Shirt**

Code: **935F**

Weight: 100-110g/m<sup>2</sup>



- Smart corporate shirt in classic poplin fabric
- Durable and ideal for hard-wearing applications
- True easy care fabric requires minimum ironing
- Classic single-button collar
- Single pocket over left chest
- Rounded hem
- **Also available in Mens sizes, code 935M -page 41**



Fabric	65% Polyester 35% Cotton Blend							
Weight	100-110g/m <sup>2</sup>							
Size	XS	S	M	L	XL	2XL	3XL	4XL
To Fit (ins)	30-32	32-34	34-36	36-38	38-41	41-44	44-47	47-51
Dress Size	8	10	12	14	16	18	20	22



**935F**

**Kustom Kit Ladies Workwear Pinpoint Oxford Short Sleeve Shirt**

Code: **KK360**

Weight: 135g/m<sup>2</sup>

**KUSTOM KIT.**

- Classic fused collar
- Semi fitted
- Rounded hem
- Front and back darts
- Spare button
- **Also available in men's sizes, code KK350 - page 40**



Fabric	70% Cotton, 30% Polyester						
Weight	135g/m <sup>2</sup>						
Dress Size	8	10	12	14	16	18	20
Bust	30	32	34	36	38	40	42



**KK360**

**Kustom Kit Ladies Workwear Oxford Long Sleeve Shirt**

Code: **KK361**

Weight: **135g/m<sup>2</sup>**

**KUSTOM KIT.**

- Classic fused collar
- Semi fitted
- Adjustable cuff
- Double folded seams
- Rounded hem
- Front and back darts
- Spare button
- **Also available in men's sizes, code KK351 - page 40**



**KK361**



Fabric	70% Cotton, 30% Polyester						
Weight	135g/m <sup>2</sup>						
Dress Size	8	10	12	14	16	18	20
Bust	30	32	34	36	38	40	42

**Kustom Kit Ladies ¾ Sleeve Corporate Oxford Shirt**

Code: **KK710**

Weight: **125g/m<sup>2</sup>**

**KUSTOM KIT.**

- Open Neck
- Fused Collar
- Semi fitted
- Front and back darts
- Back yoke
- Rounded hem
- Turn back cuff
- Spare button



**KK710**



Fabric	85% Cotton 15% Polyester						
Weight	125g/m <sup>2</sup>						
Dress Size	8	10	12	14	16	18	20
Bust	30	32	34	36	38	40	42

**Kustom Kit Ladies Short Sleeve Corporate Pocket Oxford Shirt**

Code: **KK719**

Weight: **125g/m<sup>2</sup>**

**KUSTOM KIT.**

- Finest quality and value Oxford shirt
- Classic collar
- Shaped side seams
- Comfort finish cuff seams
- Front and back darts
- Semi fitted
- Rounded hem
- Chest pocket



**KK719**



Fabric	85% Cotton 15% Polyester						
Weight	125g/m <sup>2</sup>						
Dress Size	8	10	12	14	16	18	20
Bust	30	32	34	36	38	40	42

**Kustom Kit Ladies Short Sleeve Corporate Oxford Shirt**

Code: **KK701**

Weight: **125g/m<sup>2</sup>**

**KUSTOM KIT.**

- Finest quality and value Oxford shirt
- Button down fused collar
- Rounded hem
- Comfort finish cuffs
- Two Spare buttons
- Semi-fitted
- **Also available in men's sizes, code KK109 - page 39**



**KK701**



Fabric	85% Cotton 15% Polyester						
Weight	125g/m <sup>2</sup>						
Dress Size	8	10	12	14	16	18	20
Bust	30	32	34	36	38	40	42

\*Sizes 22-26 only available in Black, White, Light Blue & Red

**Kustom Kit Ladies Long Sleeve Corporate Oxford Shirt**

Code: **KK702**

Weight: **125g/m<sup>2</sup>**

**KUSTOM KIT.**

- Finest quality and value Oxford shirt
- Classic collar
- Semi-fitted
- Rounded hem
- Spare button
- Adjustable cuffs
- Double folded seams
- **Also available in men's sizes, code KK105 - page 39**



**KK702**



Fabric	85% Cotton 15% Polyester						
Weight	125g/m <sup>2</sup>						
Dress Size	8	10	12	14	16	18	20
Bust	30	32	34	36	38	40	42

\*Sizes 22-26 only available in Black, White, Light Blue

**Fruit Of The Loom Lady-Fit Long Sleeve Poplin Shirt**

Code: **65012**

Weight: **115-120g/m<sup>2</sup>**



- Shaped side seams
- Back and bust darts for enhanced comfort and a feminine fit
- Self-coloured buttons
- Self-fabric breast pocket
- **Also available in men's sizes, code 65118 - page 40**



**65012**



Fabric	55% Cotton, 45% Polyester						
Weight	115-120g/m <sup>2</sup>						
Size	XS	S	M	L	XL	2XL	3XL
Dress Size	8	10	12	14	16	18	20

**Fruit Of The Loom Lady-Fit Short Sleeve Poplin Shirt**

Code: **65014**

Weight: **115-120g/m<sup>2</sup>**



- Shaped side seams
- Back and bust darts for enhanced comfort and a feminine fit
- Self-coloured buttons
- Self-fabric breast pocket
- **Also available in Mens sizes, code 65116 - page 40**



**65014**



Fabric	55% Cotton, 45% Polyester						
Weight	115-120g/m <sup>2</sup>						
Size	XS	S	M	L	XL	2XL	3XL
Dress Size	8	10	12	14	16	18	20

**Russell Collection Ladies Short Sleeve Easy Care Oxford Shirt**

Code: **933F**

Weight: **130-135g/m<sup>2</sup>**



- Classic Oxford shirt in easy care fabric
- A 'must-have' for every work place
- 2 button collar stand with classic shaped collar
- Darts at bustline and back panel for tailored fit
- Rounded hem



**933F**



Fabric	70% Cotton 30% Polyester						
Weight	130-135g/m <sup>2</sup>						
Size	XS	S	M	L	XL		
To Fit (ins)	30-32	32-34	34-36	36-38	38-41		
Dress Size	8	10	12	14	16		
Size	2XL	3XL	4XL	5XL	6XL		
To Fit (ins)	41-44	44-47	47-51	51-54	54-57		
Dress Size	18	20	22	24	26		

**Kustom Kit Ladies Pinstripe Short Sleeve Shirt**

Code: **KK713**

Weight: 100g/m<sup>2</sup>

**KUSTOM KIT.**

- Timeless classic shirt
- Soft fused collar
- Semi fitted
- Rounded hem
- Pearl buttons with spare
- Comfort finish cuff seams
- Hairline woven yarn dyed stripe fabric
- Front and back darts



Fabric	55% Cotton 45% Polyester					
Weight	100g/m <sup>2</sup>					
Dress Size	8	10	12	14	16	18 20 22
Bust	30	32	34	36	38	40 42 44



**Dickies Ladies Long Sleeve Blouse**

Code: **SH64300**

Weight: 135g/m<sup>2</sup>



- Ladies fitted blouse
- Long sleeve
- Non button down collar
- Inverted pleat in back for ease of movement
- Round hem
- Adjustable cuffs
- **Also available in men's sizes, code SH64200 - page 40**



Fabric	70% Cotton, 30% Polyester					
Dress	10	12	14	16	18	20
Bust (ins)	33	35	37	39	41	43
Waist (ins)	25	27	29	31	33	35
Hip (ins)	35	37	39	41	43	45



**Dickies Ladies Short Sleeve Blouse**

Code: **SH64350**

Weight: 135g/m<sup>2</sup>



- Ladies fitted blouse
- Short sleeve
- Non button down collar
- Inverted pleat in back for ease of movement
- Round hem
- **Also available in men's sizes, code SH64250 - page 40**



Fabric	70% Cotton, 30% Polyester					
Dress	10	12	14	16	18	20
Bust (ins)	33	35	37	39	41	43
Waist (ins)	25	27	29	31	33	35
Hip (ins)	35	37	39	41	43	45



**Kustom Kit Ladies Short Sleeve Business Shirt**

Code: **KK742**

Weight: 105g/m<sup>2</sup>

**KUSTOM KIT.**

- Soft fused collar
- Easy iron.
- Double folded side and sleeve seams
- Single needle stitched yoke and armholes
- Shirt tail hem
- Two spare buttons
- **Also available in Men's sizes, code KK102- page 41**



Fabric	55% Cotton 45% Polyester					
Weight	105g/m <sup>2</sup>					
Dress Size	10	12	14	16	18	20
Bust	32	34	36	38	40	42



**Kustom Kit Ladies Long Sleeve Business Shirt**

Code: **KK743**

Weight: 105g/m<sup>2</sup>

**KUSTOM KIT.**

- Soft fused collar
- Three buttoned cuff
- Easy iron
- Doubled folded side and sleeve seams
- Single needle stitched yoke and armholes
- Shirt tail hem
- Two spare buttons
- **Also available in Men's sizes, code KK104- page 41**



Fabric	55% Cotton 45% Polyester					
Weight	105g/m <sup>2</sup>					
Dress Size	10	12	14	16	18	20
Bust	32	34	36	38	40	42



**Kustom Kit Ladies Short Sleeve Revere Collar Stretch Blouse**

Code: **KK704**

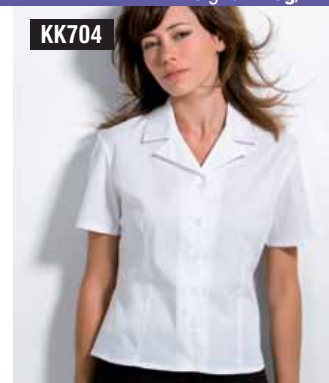
Weight: 120g/m<sup>2</sup>

**KUSTOM KIT.**

- Fashionable, feminine cut for a great fit
- Semi fitted
- Revere collar
- Spare button
- Rounded hem
- Front darts
- Comfort finish cuff seams



Fabric	57% Cotton, 40% Polyester, 3% Lycra					
Weight	120g/m <sup>2</sup>					
Dress Size	10	12	14	16	18	20 22
Bust	32	34	36	38	40	42 44



**Kustom Kit Ladies Continental ¾ Length Sleeve Blouse**

Code: **KK715**

Weight: 115g/m<sup>2</sup>

**KUSTOM KIT.**

- Winning style for a wide range of applications
- Three quarter sleeves
- Cuff vent
- Side vents
- Rounded hem
- Concealed placket
- Pearl buttons with spare
- Fitted



Fabric	65% Polyester 35% Cotton					
Weight	115g/m <sup>2</sup>					
Dress Size	8	10	12	14	16	18 20 22*
Bust	30	32	34	36	38	40 42 44



**Kustom Kit Ladies Continental Short Sleeve Blouse**

Code: **KK720**

Weight: 115g/m<sup>2</sup>

**KUSTOM KIT.**

- Inspired styling
- Fused collar
- Fitted
- Rounded bottom
- Spare button
- Bust darts
- Two back darts
- Side vents
- Curved front panels
- Comfort finished cuff seams



Fabric	65% Polyester 35% Cotton					
Weight	115g/m <sup>2</sup>					
Dress Size	8	10	12	14	16	18 20 22
Bust	30	32	34	36	38	40 42 44



**Kustom Kit Ladies Continental Long Sleeve Blouse**Code: **KK721**Weight: 115g/m<sup>2</sup>**KUSTOM KIT.**

- Spare button
- Fused collar
- Rounded hem
- Turn back cuff
- Shaped side seams
- Side vent detail
- Fitted
- Back darts
- Bust darts
- Curved front panel
- Easy iron fabric



easy

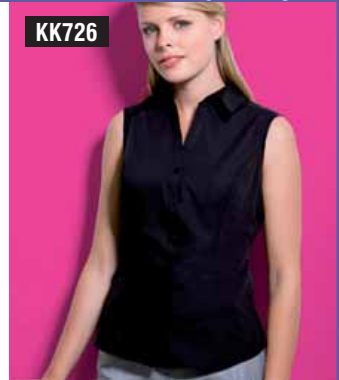


Fabric	65% Polyester 35% Cotton					
Weight	115g/m <sup>2</sup>					
Dress Size	8	10	12	14	16	18 20 22
Bust	30	32	34	36	38	40 42 44

**Kustom Kit Ladies Continental Sleeveless Blouse**Code: **KK726**Weight: 115g/m<sup>2</sup>**KUSTOM KIT.**

- Spare button
- Soft interlined fused collar
- Open neckline
- Semi fitted
- Curved front side panels
- Two darts at back
- Self fabric bound armholes
- Rounded bottom
- Side vents

easy



Fabric	65% Polyester 35% Cotton					
Weight	115g/m <sup>2</sup>					
Dress Size	8	10	12	14	16	18 20
Bust	30	32	34	36	38	40 42

**Kustom Kit Ladies Continental Sleeveless Blouse**Code: **KK727**Weight: 115g/m<sup>2</sup>**KUSTOM KIT.**

- Mandarin collar
- Cap sleeve
- Front inner placket
- Square buttons
- Fabric looped button holes
- Two bust darts
- Two front darts
- Two back darts
- Fitted



easy

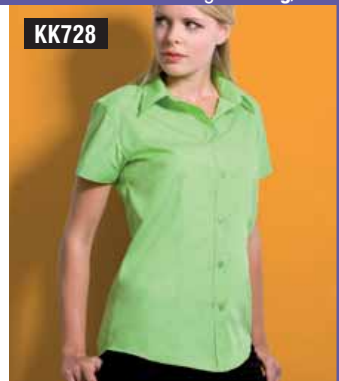


Fabric	65% Polyester 35% Cotton					
Weight	115g/m <sup>2</sup>					
Dress Size	8	10	12	14	16	18 20
Bust	30	32	34	36	38	40 42

**Kustom Kit Ladies Workforce Short Sleeve Shirt**Code: **KK728**Weight: 115g/m<sup>2</sup>**KUSTOM KIT.**

- Fused stand up collar
- Twin needle stitched armholes
- Twin needle stitched sleeve and side seams
- Optional pocket
- Semi fitted
- Front and back darts
- Back yoke
- Rounded hem
- Spare button
- Also available in men's sizes, code **KK100** - page 41

easy



Fabric	65% Polyester 35% Cotton					
Weight	115g/m <sup>2</sup>					
Dress Size	10	12	14	16	18	20
Bust	32	34	36	38	40	42

**Kustom Kit Ladies Corporate Scoop Neck Top**Code: **KK760**Weight: 200g/m<sup>2</sup>**KUSTOM KIT.**

- Self fabric bound neckline
- Twin needle stitched hem and cuffs
- Comfort finish cuff seam
- Shaped side seams

**STRETCH**

Fabric	95% Cotton, 5% Elastane			
Weight	200g/m <sup>2</sup>			
Dress Size	8-10	12-14	16-18	20-22
Bust	30-32	34-36	38-40	42-44

**Kustom Kit Ladies Corporate Sleeveless V-Neck Mandarin Collar Top**Code: **KK765**Weight: 200g/m<sup>2</sup>**KUSTOM KIT.**

- V-neck mandarin collar
- Twin needle stitched hem
- Tape reinforced shoulder seams
- Self fabric faced V
- Shaped side seams
- Straight hem

**STRETCH**

Fabric	95% Cotton, 5% Elastane			
Weight	200g/m <sup>2</sup>			
Dress Size	8-10	12-14	16-18	20-22
Bust	30-32	34-36	38-40	42-44

**Kustom Kit Ladies Corporate Short Sleeve V-Neck Mandarin Top**Code: **KK770**Weight: 200g/m<sup>2</sup>**KUSTOM KIT.**

- V-neck mandarin collar
- Twin needle stitched hem and cuffs
- Comfort finished cuff seams
- Tape reinforced shoulder seams
- Self fabric faced V
- Shaped side seams

**STRETCH**

Fabric	95% Cotton, 5% Elastane			
Weight	200g/m <sup>2</sup>			
Dress Size	8-10	12-14	16-18	20-22
Bust	30-32	34-36	38-40	42-44

**Kustom Kit Ladies Corporate Keyhole Neckline Mandarin Collar Top**Code: **KK755**Weight: 200g/m<sup>2</sup>**KUSTOM KIT.**

- Keyhole neckline
- Mandarin collar
- Twin needle stitched hem and cuffs
- Comfort finish cuff seam
- Tape reinforced shoulder seams
- Shaped side seams

**STRETCH**

Fabric	95% Cotton, 5% Elastane			
Weight	200g/m <sup>2</sup>			
Dress Size	8-10	12-14	16-18	20-22
Bust	30-32	34-36	38-40	42-44

**Kustom Kit Ladies Corporate Deep Round Neck Long Sleeved Top**

Code: **KK758**

Weight: 200g/m<sup>2</sup>

**KUSTOM KIT.**

- Deep round neck
- Two epaulettes at front fastened with matching buttons
- Raglan sleeves
- Comfort finish cuff seams
- Self fabric taped back neck

**STRETCH**

**KK758**



Fabric	95% Cotton, 5% Elastane				
Weight	200g/m <sup>2</sup>				
Dress Size	8-10	12-14	16-18	20-22	
Bust	30-32	34-36	38-40	42-44	

**Kustom Kit Ladies Corporate Sleeveless Square Neck Top**

Code: **KK772**

Weight: 200g/m<sup>2</sup>

**KUSTOM KIT.**

- Square neckline
- Self fabric bound neckline
- Self fabric bound armholes
- Twin needle stitched hem

**STRETCH**

**KK772**

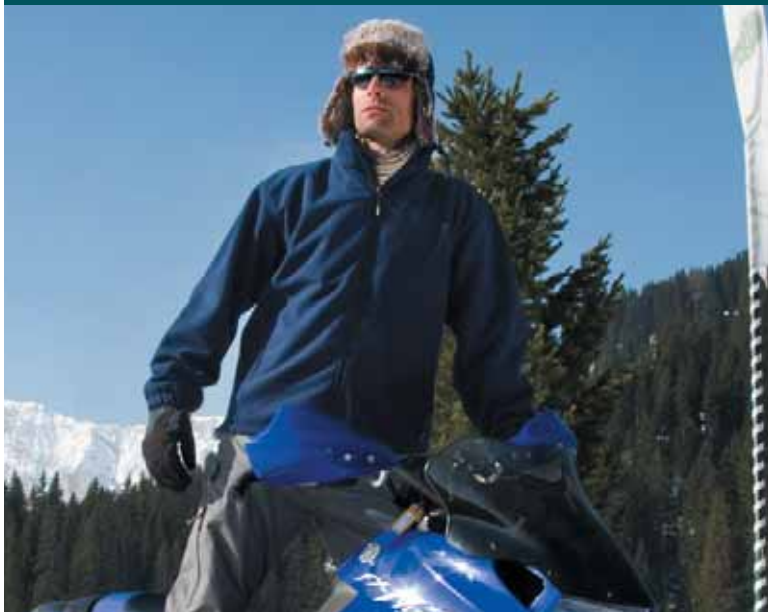


Fabric	95% Cotton, 5% Elastane				
Weight	200g/m <sup>2</sup>				
Dress Size	8-10	12-14	16-18	20-22	
Bust	30-32	34-36	38-40	42-44	



# Outerwear: Fleece

pages: 46-51



**Result®**

Largest collection of stock fleece in Europe with over 36 styles available.

Result's extensive range of competitively priced Active fleece products are the ideal seasonal choice, delivering outstanding value for money as a low cost promotional item. These wonderfully warm, easy to wear, high quality fleece products are available in mens, womens and childrens sizes all offering a great colour range.