

Hospitality

HOSPITALITY

pages: 32-38



Denny's Black Elasticated Trouser

Code: DC18B

Weight: 195g/m²

Denny's
UNIFORMS

- Hard wearing
- Easy wash
- Tunnelled elastic waist with drawstring
- 2 side pockets
- 1 hip pocket
- Suitable for industrial laundering
- Bleach resistant



Black
BLK

Fabric	65% Polyester 35% Cotton							
Weight	195g/m ²							
Size	XS	S	M	L	XL	1X	2X	3X
Waist (ins)	24-26	28-30	32-34	36-38	40-42	44-46	48-50	52-54



Denny's Check Trouser

Code: DC28E

Weight: 195g/m²

Denny's
UNIFORMS

- Hard wearing
- Easy wash
- Tunnelled elastic waist with drawstring
- 2 side pockets
- 1 hip pocket



Black BLK
White WHI

Fabric	65% Polyester 35% Cotton							
Weight	195g/m ²							
Size	XS	S	M	L	XL	1X	2X	3X
Waist (ins)	24-26	28-30	32-34	36-38	40-42	44-46	48-50	52-54



Denny's Blue/White Check Fully Elasticated Trouser

Code: DC01E

Weight: 195g/m²

Denny's
UNIFORMS

- Hard wearing
- Easy wash
- Tunnelled elastic waist with drawstring
- Two side pockets
- 1 hip pocket
- Suitable for industrial laundering
- Bleach resistant fabric



Navy NAV
White WTE

Fabric	65% Polyester 35% Cotton						
Weight	195g/m ²						
Leg (ins)	Regular 32						
Size	XS	S	M	L	XL	1X	2X
To Fit (ins)	24-26	28-30	32-34	36-38	40-42	44-46	48-50



Denny's Economy Long Sleeve Chef's Jacket

Code: DD08C

Weight: 200g/m²

Denny's
UNIFORMS

- Quality long sleeve chef's jacket
- Unbreakable stainless steel studs
- Generous sizings for extra comfort
- Shaped sleeve
- Suitable for industrial laundering



Black
BLK

Fabric	65% Polyester 35% Cotton						
Weight	200g/m ²						
Size	XS	S	M	L	XL	1X	2X
To Fit (ins)	32-34	36-38	40-42	44-46	48-50	52-54	56-58



All sizes and fabric weights are approximate and for guidance only. Colours are only as accurate as the printing process allows.

Denny's Economy Short Sleeve Chef's Jacket

Code: **DD08CS**

Weight: 200g/m²

Denny's
UNIFORMS

DD08CS

- Quality short sleeve chef's jacket
- Unbreakable stainless steel studs
- Generous sizings for extra comfort
- Shaped sleeve
- Suitable for industrial laundering



Fabric	65% Polyester 35% Cotton					
Weight	200g/m ²					
Size	XS	S	M	L	XL	1X 2X
To Fit (ins)	32-34	36-38	40-42	44-46	48-50	52-54 56-58

Denny's Long Sleeve Chef's Jacket

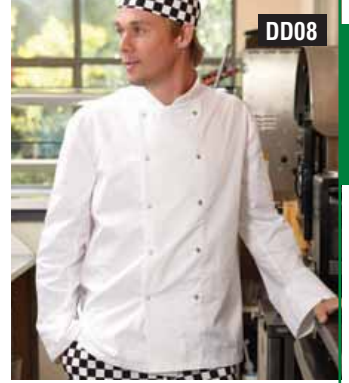
Code: **DD08**

Weight: 200g/m²

Denny's
UNIFORMS

DD08

- Quality long sleeve chef's jacket
- Unbreakable stainless steel studs
- Generous sizings for extra comfort
- Shaped sleeve
- Denny's best selling long sleeve chef's jacket
- Suitable for industrial laundering
- Lightweight jacket



Fabric	65% Polyester 35% Cotton					
Weight	200g/m ²					
Size	XS	S	M	L	XL	1X 2X
To Fit (ins)	32-34	36-38	40-42	44-46	48-50	52-54 56-58

Denny's Short Sleeve Chef's Jacket

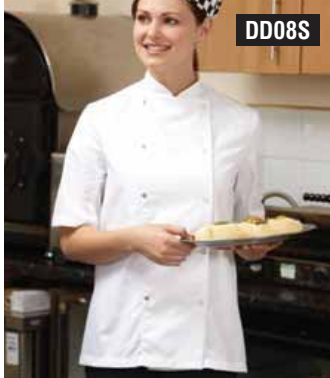
Code: **DD08S**

Weight: 200g/m²

Denny's
UNIFORMS

DD08S

- Quality short sleeve chef's jacket
- Generous sizings for extra comfort
- Shaped sleeve
- Denny's best selling short sleeve chef's jacket
- Suitable for industrial laundering
- Lightweight jacket
- Unbreakable stainless steel press studs



Fabric	65% Polyester 35% Cotton					
Weight	200g/m ²					
Size	XS	S	M	L	XL	1X 2X
To Fit (ins)	32-34	36-38	40-42	44-46	48-50	52-54 56-58

Denny's Lightweight Long Sleeve Chef's Jacket

Code: **DD20**

Weight: 200g/m²

Denny's
UNIFORMS

DD20

- Quality lightweight long sleeve chef's jacket with removable black plastic studs
- Generous sizings for extra comfort
- Shaped sleeve
- Quality cloth
- Suitable for industrial laundering



Fabric	65% Polyester 35% Cotton					
Weight	200g/m ²					
Size	XXS	XS	S	M	L	XL 1X 2X
Waist (ins)	28-30	32-34	36-38	40-42	44-46	48-50 52-54 56-58

Denny's Lightweight Short Sleeve Chef's Jacket

Code: **DD20S**

Weight: 200g/m²

Denny's
UNIFORMS

DD20S

- Quality lightweight short sleeve chef's jacket with removable black plastic studs
- Generous sizings for extra comfort
- Shaped sleeve
- Suitable for industrial laundering



Fabric	65% Polyester 35% Cotton					
Weight	200g/m ²					
Size	XXS	XS	S	M	L	XL 1X 2X
Waist (ins)	28-30	32-34	36-38	40-42	44-46	48-50 52-54 56-58

Denny's Long Sleeve Economy Chef's Jacket

Code: **DD19**

Weight: 200g/m²

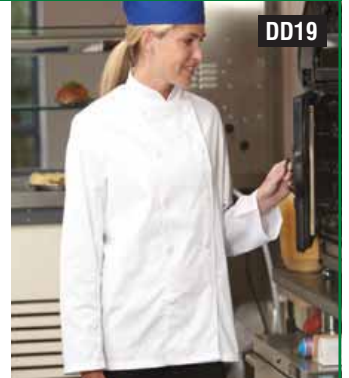
Denny's
UNIFORMS

DD19

- Chef's jacket with a French cuff
- 10 sewn on polyester buttons
- Pen pocket on the sleeve



NEW PRODUCT



Fabric	65% Polyester 35% Cotton				
Weight	200g/m ²				
Size	S	M	L	XL	1X
To Fit (ins)	36-38	40-42	44-46	48-50	52-54

Denny's Short Sleeve Economy Chef's Jacket

Code: **DD19S**

Weight: 200g/m²

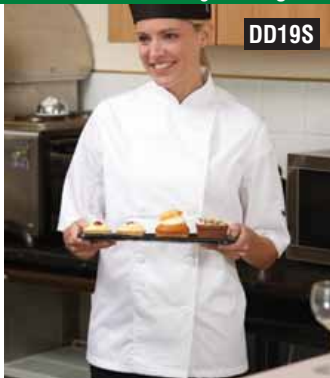
Denny's
UNIFORMS

DD19S

- Chef's jacket with a French cuff
- 10 sewn on polyester buttons
- Pen pocket on the sleeve



NEW PRODUCT



Fabric	65% Polyester 35% Cotton				
Weight	200g/m ²				
Size	S	M	L	XL	1X
To Fit (ins)	36-38	40-42	44-46	48-50	52-54

Denny's Skull Cap

Code: **DG07**

Denny's
UNIFORMS

- Chef's skull cap
- 5 eyelet holes in crown for improved airflow
- Hard wearing
- Easy care
- Long lasting
- Comfortable
- Suitable for industrial cleaning
- Elasticated back



DG07A

Fabric	65% Polyester 35% Cotton			
Size	S	M	L	XL
Head (ins)	22	23	24	25

Denny's Check Skull Cap

Code: DG23E

Weight: 195g/m²

Denny's
UNIFORMS

- 5 eyelet holes for improved airflow
- Hard wearing
- Easy care
- Long lasting
- Comfortable

60
WASH

Black BLK
White WHI

Fabric	65% Polyester 35% Cotton			
Size	M	L		
Head (ins)	23	24		



DG23E

Denny's White Skull Cap

Code: DG06

Weight: 245g/m²

Denny's
UNIFORMS

- Chef's skull cap
- 5 eyelet holes in crown for improved airflow
- Four thicknesses of material for better moisture absorbancy
- Hard wearing
- Easy care
- Long lasting
- Comfortable
- Suitable for industrial cleaning

70
WASH

White WHI

Fabric	65% Polyester 35% Cotton			
Size	S	M	L	XL
Head (ins)	22	23	24	25



DG06

Bargear® Mens Short Sleeved Mock Turn Back Cuffs Bar Shirt

Code: KK119

Weight: 120g/m²

bargear®
Serve in style

- Fused collar
- Mock turn back cuffs with epaulettes
- Single needle stitched yoke and armholes
- Shirt tail hem
- Comfort finish cuff seams
- Spare button
- **Also available in ladies sizes, code KK739 - page 35**

Black BLK
LYCRA
STRETCH

Fabric	57% Cotton 40% Polyester 3% Lycra				
Weight	120g/m ²				
Size	S	M	L	XL	2XL
To Fit (ins)	38	40	42	44	46-48
Neck	14 ^{1/2}	15-15 ^{1/2}	16-16 ^{1/2}	17-17 ^{1/2}	18-18 ^{1/2}



KK119

Bargear® Men's Long Sleeved Bar Shirt

Code: KK121

Weight: 120g/m²

bargear®
Serve in style

- Spare button
- Fused collar
- Double folded side & sleeves seams
- Adjustable cuffs
- Shirt tail hem
- Single needle stitched armholes
- **Also available in ladies sizes, code KK738 - page 35**

Black BLK
LYCRA
STRETCH

Fabric	57% Cotton 40% Polyester 3% Lycra				
Weight	120g/m ²				
Size	S	M	L	XL	2XL
To Fit (ins)	38	40	42	44	46-48
Neck	14 ^{1/2}	15-15 ^{1/2}	16-16 ^{1/2}	17-17 ^{1/2}	18-18 ^{1/2}



KK121

Bargear® Men's Short Sleeved Bar Shirt

Code: KK120

Weight: 120g/m²

bargear®
Serve in style

- Stylish soft fused collar
- Shaped shirt tail hem
- Double folded side and sleeve seams
- Mock turn back cuffs
- Back yoke
- Matching buttons
- Spare button
- **Also available in ladies sizes, code KK735 - page 34**

Black BLK
Chocolate CHD
LYCRA
STRETCH

Fabric	57% Cotton 40% Polyester 3% Lycra				
Weight	120g/m ²				
Size	S	M	L	XL	2XL
To Fit (ins)	38	40	42	44	46-48
Neck	14 ^{1/2}	15-15 ^{1/2}	16-16 ^{1/2}	17-17 ^{1/2}	18-18 ^{1/2}



KK120

Bargear® Mens Short Sleeved Mandarin Collar Bar Shirt

Code: KK122

Weight: 120g/m²

bargear®
Serve in style

- Soft fused mandarin collar
- Concealed placket
- Shirt tail hem
- Double folded side and sleeve seams
- Single needle stitched yoke and armholes
- Spare button
- **Also available in ladies sizes, code KK736 - page 35**

Black BLK
LYCRA
STRETCH

Fabric	57% Cotton 40% Polyester 3% Lycra				
Weight	120g/m ²				
Size	S	M	L	XL	2XL
To Fit (ins)	38	40	42	44	46-48



KK122

Bargear® Mens Long Sleeved Mandarin Collar Bar Shirt

Code: KK123

Weight: 120g/m²

bargear®
Serve in style

NEW PRODUCT

- Soft fused mandarin collar
- Concealed placket
- Adjustable cuffs
- Shirt tail bottom
- Double folded side and sleeve seams
- Single needle stitched yoke and armholes
- Spare buttons
- **Also available in ladies sizes, code KK740 - page 35**

Black BLK
LYCRA
STRETCH

Fabric	57% Cotton 40% Polyester 3% Lycra				
Weight	120g/m ²				
Size	S	M	L	XL	2XL
To Fit (ins)	38	40	42	44	46-48



KK123

Bargear® Ladies Short Sleeved Bar Shirt

Code: KK735

Weight: 120g/m²

bargear®
Serve in style

- Fashion fitted
- Concealed placket
- Soft fused collar
- Front and back darts
- Rounded hem
- Comfort finish cuff seams
- Spare button
- **Also available in men's sizes, code KK120 - page 34**

Black BLK
Chocolate CHD
LYCRA
STRETCH

Fabric	57% Cotton 40% Polyester 3% Lycra						
Weight	120g/m ²						
Dress Size	8	10	12	14	16	18	20
Bust	30	32	34	36	38	40	42



KK735

Bargear® Ladies Short Sleeved Mandarin Collar Bar Shirt

Code: **KK736**

Weight: 120g/m²



- Soft fused mandarin collar
- Concealed placket
- Shirt tail hem
- Side vents
- Single needle stitched shoulders and armholes
- Spare button
- **Also available in men's sizes, code KK122 - page 34**



KK736

Fabric	57% Cotton 40% Polyester 3% Lycra					
Weight	120g/m ²					
Dress Size	8	10	12	14	16	18 20
Bust	30	32	34	36	38	40 42

Bargear® Mens Long Sleeved Bar Waistcoat Shirt

Code: **KK137**

Weight: 120g/m²



- Soft fused collar
- Adjustable belt with buckle fastening at back
- Two pockets at lower front
- 'V' shaped front hem
- Straight hem at back
- Two buttoned adjustable cuffs
- Spare button
- **Also available in ladies sizes, code KK737 - page 35**



KK137

Fabric	57% Cotton 40% Polyester 3% Lycra				
Weight	120g/m ²				
Size	S	M	L	XL	2XL
To Fit (ins)	38	40	42	44	46-48
Neck	14 ^{1/2}	15-15 ^{1/2}	16-16 ^{1/2}	17-17 ^{1/2}	18-18 ^{1/2}

Bargear® Ladies Long Sleeved Bar Waistcoat Shirt

Code: **KK737**

Weight: 120g/m²



- Soft fused collar
- Adjustable belt with buckle fastening at back
- Two Lower pockets at front
- 'V' shaped front hem
- Straight hem at back
- Two back pleats
- Button cuff link fastened cuffs
- Spare button
- **Also available in men's sizes, code KK137 - page 35**



KK737

Fabric	57% Cotton 40% Polyester 3% Lycra					
Weight	120g/m ²					
Dress Size	8	10	12	14	16	18
Bust	30	32	34	36	38	40

Bargear® Ladies Long Sleeved Bar Shirt

Code: **KK738**

Weight: 120g/m²



- Soft fused collar
- Semi fitted
- Two buttoned adjustable cuffs
- Double folded side and sleeve seams
- Double stitched yoke and armholes
- Shirt tail hem
- Spare button
- **Also available in men's sizes, code KK121 - page 34**



KK738

Fabric	57% Cotton 40% Polyester 3% Lycra					
Weight	120g/m ²					
Dress Size	8	10	12	14	16	18 20
Bust	30	32	34	36	38	40 42

Bargear® Ladies Short Sleeved Mock Turn Back Cuffs Bar Shirt

Code: **KK739**

Weight: 120g/m²



- Soft fused collar
- Shirt tail hem
- Single needle stitched yoke and armholes
- Spare button
- Mock turn back cuffs with epaulettes
- **Also available in men's sizes, code KK119 - page 34**



KK739

NEW PRODUCT

Fabric	57% Cotton 40% Polyester 3% Lycra					
Weight	120g/m ²					
Dress Size	8	10	12	14	16	18 20
Bust	30	32	34	36	38	40 42

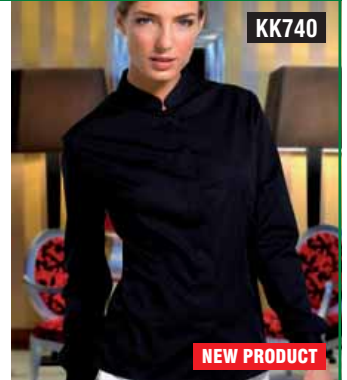
Bargear® Ladies Long Sleeved Mandarin Collar Bar Shirt

Code: **KK740**

Weight: 120g/m²



- Soft fused mandarin collar
- Concealed placket
- Adjustable cuffs
- Shirt tail hem
- Single needle stitched yoke and armholes
- Spare button
- **Also available in men's sizes, code KK123 - page 34**



KK740

NEW PRODUCT

Fabric	57% Cotton 40% Polyester 3% Lycra					
Weight	120g/m ²					
Dress Size	8	10	12	14	16	18 20
Bust	30	32	34	36	38	40 42

Bargear® Ladies ¾ Sleeve Bar Shirt

Code: **KK745**

Weight: 120g/m²



- Open neck
- Fused collar
- Semi fitted
- Front and back darts
- Back yoke
- Rounded hem
- Turn back cuffs
- Spare Button



KK745

Fabric	57% Cotton 40% Polyester 3% Lycra					
Weight	120g/m ²					
Dress Size	8	10	12	14	16	18 20
Bust	30	32	34	36	38	40 42

Bargear® Ladies Cap Sleeve Bar Shirt

Code: **KK795**

Weight: 120g/m²



- Open Neck
- Fused Collar
- Fitted
- Rounded hem
- Cap Sleeve
- Back darts
- Curved front panels with piping detail
- Comfort finish Cuff Seams
- Spare button



KK795

Fabric	57% Cotton 40% Polyester 3% Lycra					
Weight	120g/m ²					
Dress Size	8	10	12	14	16	18 20
Bust	30	32	34	36	38	40 42

Denny's Unisex Waistcoat

Code: DS25

Weight: 180g/m²**Denny's**
UNIFORMS

- Unisex fully lined waistcoat with self material back
- Complete with back adjuster and two side welt pockets
- Sewn on black buttons and fully machine washable
- Wash 40 degrees
- Generous length for use with lower cut trousers

Black
BLK**NEW PRODUCT**

Fabric	100% Polyester				
Weight	180g/m ²				
Size	XS	S	M	L	XL
To Fit (ins)	32-34	36-38	40-42	44-46	48-50
Back Length	21	23	24	24	25



DS25

Bargear® Mens Café Bar Top

Code: KK511

Weight: 200g/m²**bargear®**
Serve in style

- Narrow high 'V' neck
- Mitred 'V'
- Comfort finish cuff seams
- Taped back neck
- Single needle stitching around neck
- Self fabric taped shoulder seams
- Semi fitted

STRETCHBlack
BLK

Fabric	95% Cotton 5% Elastane				
Weight	200g/m ²				
Size	S	M	L	XL	2XL
To Fit (ins)	38	40	42	44	46-48



KK511

Denny's Cotton Square Apron

Code: DP01E

Weight: 245g/m²**Denny's**
UNIFORMS

- Waist apron
- Anti-tangle ties
- Large size chef's square apron
- Reinforced corners
- Slot to take replacement tie
- Suitable for industrial laundering
- 36" wide x 36" long

70°
WASHWhite
WHI

Fabric	100% Cotton	
Weight	245g/m ²	
Size	ONE SIZE	



DP01E

Bargear® Unisex Long Bar Apron

Code: KK514

Weight: 280g/m²**bargear®**
Serve in style

- Superwash 60 fabric treatment (allowing a 60 degree wash)
- Double pocket centre front
- Self fabric waist ties

100%
COTTON
SUPERWASH
60°Black
BLK**NEW PRODUCT**

Fabric	100% Cotton twill	
Weight	280g/m ²	
Size	ONE SIZE	



KK514

Denny's Economy Bib Apron

Code: DP10CNQ (Without Pocket)

Weight: 245g/m²**Denny's**
UNIFORMS

- Polycotton bib apron
- Available with and without pocket
- Bleach resistant vat dyed fabric
- High spec fabric
- Suitable for industrial laundering
- Anti-tangle ties
- 28" x 36" long

70°
WASHBlack
BLK

Fabric	65% Polyester 35% Cotton	
Weight	245g/m ²	
Size	ONE SIZE	



DP10CNQ

Denny's Economy Bib Apron

Code: DP55CNQ (With Pocket)

Weight: 245g/m²**Denny's**
UNIFORMS

- Polycotton bib apron
- Available with and without pocket
- Bleach resistant vat dyed fabric
- High spec fabric
- Suitable for industrial laundering
- Anti-tangle ties
- 28" x 36" long

70°
WASHBlack
BLK

Fabric	65% Polyester 35% Cotton	
Weight	245g/m ²	
Size	ONE SIZE	



DP55CNQ

Denny's Economy Short Bar Apron

Code: DP31CN (Without Pocket)

Weight: 245g/m²**Denny's**
UNIFORMS

- Short bar apron
- Available with and without pocket
- Bleach resistant vat dyed fabric
- High spec fabric
- Reinforced corners
- Slot to take replacement ties
- Suitable for industrial laundering
- Anti-tangle ties
- 28" wide x 16" long

70°
WASHBlack
BLK

Fabric	65% Polyester 35% Cotton	
Weight	245g/m ²	
Size	ONE SIZE	



DP31CN

Denny's Economy Short Bar Apron

Code: DP37CN (With Pocket)

Weight: 245g/m²**Denny's**
UNIFORMS

- Short bar apron
- Available with and without pocket
- Bleach resistant vat dyed fabric
- High spec fabric
- Reinforced corners
- Slot to take replacement ties
- Suitable for industrial laundering
- Anti-tangle ties
- 28" wide x 16" long

70°
WASHBlack
BLK

Fabric	65% Polyester 35% Cotton	
Weight	245g/m ²	
Size	ONE SIZE	



DP37CN

Denny's Economy Waist Apron

Code: DP49CN (Without Pocket)

Weight: 245g/m²

Denny's
UNIFORMS

- Waist apron
- Available with and without pocket
- Bleach resistant vat dyed fabric
- High spec fabric
- Reinforced corners
- Slot to take replacement ties
- Suitable for industrial laundering
- Anti-tangle ties
- 28" x 24" long



Black
BLK



DP49CN

Fabric	65% Polyester 35% Cotton
Weight	245g/m ²
Size	ONE SIZE

Denny's Economy Waist Apron

Code: DP52CN (With Pocket)

Weight: 245g/m²

Denny's
UNIFORMS

- Waist apron
- Available with and without pocket
- Bleach resistant vat dyed fabric
- High spec fabric
- Reinforced corners
- Slot to take replacement ties
- Suitable for industrial laundering
- Anti-tangle ties
- 28" x 24" long



Black
BLK



DP52CN

Fabric	65% Polyester 35% Cotton
Weight	245g/m ²
Size	ONE SIZE

Denny's Cotton Bib Apron - White

Code: DP18E

Weight: 280g/m²

Denny's
UNIFORMS

- Adjustable halter
- Anti-tangle ties
- 35" wide x 41" long
- No pocket
- Full size apron
- Reinforced corners
- Slot to take replacement tie
- Suitable for industrial laundering



White
WHI



DP18E

Fabric	100% Cotton
Weight	280g/m ²
Size	ONE SIZE

Denny's Full Length Split Apron

Code: DP82B

Weight: 245g/m²

Denny's
UNIFORMS

- Full length apron with centre split and right hand patch pocket
- Size 39" (99cm) x 37" (94cm)
- Bleach resistant vat dyed fabric
- Anti tangle ties
- Ideal for walking up and down stairs



Black
BLK

NEW PRODUCT



DP82B

Fabric	65% Polyester 35% Cotton
Weight	245g/m ²
Size	ONE SIZE

Denny's Short Bar Apron

Code: DP37 (With pocket)

Weight: 245g/m²

Denny's
UNIFORMS

- Short bar apron
- Available without pocket (see DP31)
- Bleach resistant vat dyed fabric
- High spec fabric
- Reinforced corners
- Slot to take replacement ties
- Suitable for industrial laundering
- Anti-tangle ties
- 36" x 16" long



DP37

Fabric	65% Polyester 35% Cotton
Weight	245g/m ²
Size	ONE SIZE

Denny's Short Bar Apron

Code: DP31 (Without pocket)

Weight: 245g/m²

Denny's
UNIFORMS

- Short bar apron
- Available with pocket (see DP37)
- Bleach resistant vat dyed fabric
- High spec fabric
- Reinforced corners
- Slot to take replacement ties
- Suitable for industrial laundering
- Anti-tangle ties
- 36" x 16" long



DP31

Fabric	65% Polyester 35% Cotton
Weight	245g/m ²
Size	ONE SIZE

Denny's Polycotton Waist Apron

Code: DP52 (with pocket)

Weight: 245g/m²

Denny's
UNIFORMS

- Waist apron
- Available without pocket (see DP49)
- Bleach resistant vat dyed fabric
- High spec fabric
- Reinforced corners
- Slot to take replacement ties
- Suitable for industrial laundering
- Anti-tangle ties
- 36" wide x 24" long



DP52

Fabric	65% Polyester 35% Cotton
Weight	245g/m ²
Size	ONE SIZE

Denny's Polycotton Waist Apron

Code: DP49 (Without pocket)

Weight: 245g/m²

Denny's
UNIFORMS

- Waist apron
- Available with pocket (see DP52)
- Bleach resistant vat dyed fabric
- High spec fabric
- Reinforced corners
- Slot to take replacement ties
- Suitable for industrial laundering
- Anti-tangle ties
- 36" wide x 24" long



DP49

Fabric	65% Polyester 35% Cotton
Weight	245g/m ²
Size	ONE SIZE

Denny's Polycotton Bib Apron Without Pocket

Code: DP10

Weight: 245g/m²

Denny's
UNIFORMS

- Adjustable halter
- Full size apron
- Bleach resistant vat dyed fabric
- High spec fabric
- Suitable for industrial laundering
- Anti-tangle ties
- 36" x 36" long



Fabric	65% Polyester 35% Cotton
Weight	245g/m ²
Size	ONE SIZE



DP10

Denny's Polycotton Bib Apron With Pocket

Code: DP55

Weight: 245g/m²

Denny's
UNIFORMS

- Pocket
- Adjustable halter
- Full size apron
- Bleach resistant vat dyed fabric
- High spec fabric
- Reinforced corners
- Slot to take replacement ties
- Suitable for industrial laundering
- 36" x 36" long



Fabric	65% Polyester 35% Cotton
Weight	245g/m ²
Size	ONE SIZE



DP55

Denny's Wrapover Waist Apron

Code: DP33

Weight: 245g/m²

Denny's
UNIFORMS

- Smart look
- Bleach resistant vat dyed fabric
- Reinforced corners
- Slot to take replacement tie
- Suitable for industrial laundering
- Wrapover apron
- Pocket
- 38" wide x 18" long



Fabric	65% Polyester 35% Cotton
Weight	245g/m ²
Size	ONE SIZE



DP33

Denny's Cotton Striped Butchers Apron

Code: DP85

Weight: 270g/m²

Denny's
UNIFORMS

- Fast dyed print butchers bib apron
- No pocket
- Anti-tangle ties
- Reinforced corners
- Slot to take replacement tie
- Suitable for industrial laundering
- 36" wide x 40" long
- Minimal colour loss
- Adjustable halter



Fabric	100% Cotton
Weight	270g/m ²
Size	ONE SIZE



DP85

Denny's Full Zip Multi Pocket Money Apron

Code: DW15

Weight: 245g/m²

Denny's
UNIFORMS

- Waist apron
- Money pockets
- Full length zip closed pouch pocket
- Two patch pockets overlaid and split into 3 divisions
- Bleach resistant vat dyed fabric
- Reinforced corners
- Slot to take replacement tie
- Suitable for industrial laundering
- 17" wide x 10" long



Fabric	65% Polyester 35% Cotton
Weight	245g/m ²
Size	ONE SIZE



DW15

Denny's Non Woven Re-usable Apron

Code: DP25

Denny's
UNIFORMS

- Re-usable Bib apron
- 69 cm wide x 89 cm long
- 51 cm neck loop
- Pack of 100



Fabric	Non woven re-usable
Size	Pack of 100



DP25

Denny's Money Pocket Apron

Code: DW22

Weight: 245g/m²

Denny's
UNIFORMS

- Waist apron
- Money pockets
- Bleach resistant vat dyed fabric
- Reinforced corners
- Slot to take replacement tie
- Suitable for industrial laundering
- 23" wide x 12" long



Fabric	65% Polyester 35% Cotton
Weight	245g/m ²
Size	ONE SIZE



DW22

Bargear® Unisex Bar Apron

Code: KK513

Weight: 280g/m²

bargear®
Serve in style

- Double pocket centre front one zipped and one open
- Self fabric waist ties



Fabric	100% Cotton twill
Weight	280g/m ²
Size	ONE SIZE



KK513